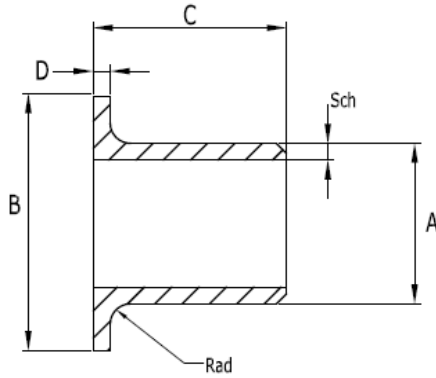
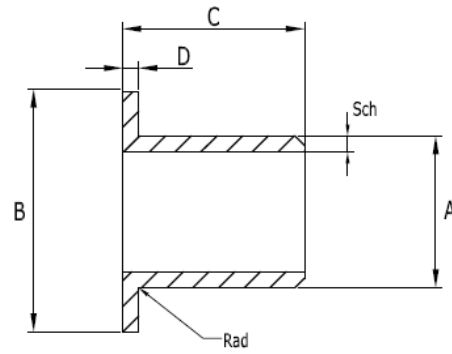


**Data Sheet**

**Lap-Joint Stub Ends MSS SP43:91**



**Type A Stub for Lap Joint Flange**

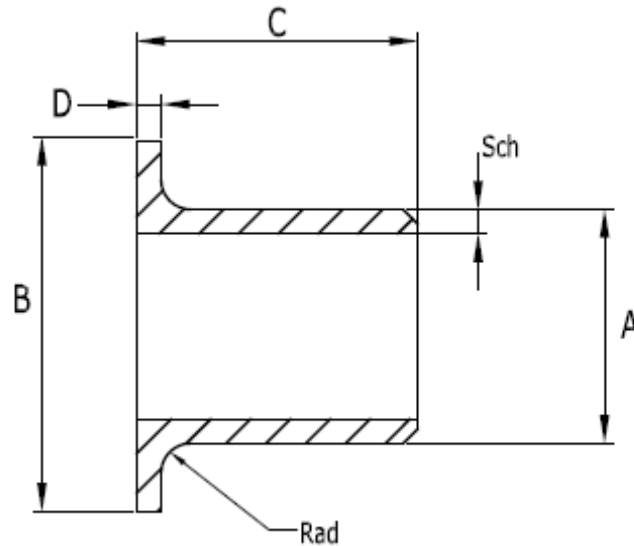


**Type B Stub for Slip-On Flange**

Nominal Bore	A	B	C	D	Radius A (Max)	Radius B (Max)	Sch 5	Sch 10	Sch 40	Sch 80
1/2"	21	35.1	50.8	Lap thickness not to be less than schedule wall thickness of shank	3.05	0.76	1.65	2.11	2.77	3.73
3/4"	27	42.9	50.8		3.05	0.76	1.65	2.11	2.87	3.91
1"	33	50.8	50.8		3.05	0.76	1.65	2.77	3.38	4.55
1 1/4"	42	63.5	50.8		4.83	0.76	1.65	2.77	3.56	4.85
1 1/2"	48	73.2	50.8		6.35	0.76	1.65	2.77	3.69	5.08
2"	60	92.2	63.5		7.87	0.76	1.65	2.77	3.91	5.54
2 1/2"	73	104.9	63.5		7.87	0.76	2.11	3.05	5.16	7.01
3"	89	127.0	63.5		9.65	0.76	2.11	3.05	5.49	7.62
3 1/2"	102	139.7	76.2		9.65	0.76	2.11	3.05	5.74	8.08
4"	114	157.2	76.2		11.18	0.76	2.11	3.05	6.02	8.56
5"	141	185.7	76.2		11.18	1.52	2.77	3.40	6.55	9.53
6"	168	215.9	88.9		12.70	1.52	2.77	3.40	7.11	10.97
8"	219	269.7	101.6		12.70	1.52	2.77	3.76	8.18	12.70
10"	273	323.9	127.0		12.70	1.52	3.40	4.10	9.27	12.70
12"	324	381.0	152.0		12.70	1.52	3.96	4.57	9.53	12.70
14"	356	412.8	152.0		12.70	1.52		6.35	11.09	19.05
16"	406	469.9	152.0		12.70	1.52		6.35	12.70	21.44
18"	457	533.4	152.0		12.70	1.52		6.35	14.28	23.83
20"	508	584.2	152.0		12.70	1.52		6.35	15.09	26.19
24"	610	692.2	152.0		12.70	1.52		6.35		30.96

**Data Sheet**

**Lap-Joint Stub Ends ANSI B16.9:86**



Nominal Bore	A	B	C	D	Radius of Fillet
1/2"	21	35.1	76.2	Lap thickness not to be less than schedule wall thickness of shank	3.2
3/4"	27	42.9	76.2		3.2
1"	33	50.8	101.6		3.2
1 1/4"	42	63.5	101.6		4.8
1 1/2"	48	73.2	101.6		6.4
2"	60	92.2	152.0		7.9
2 1/2"	73	104.9	152.0		7.9
3"	89	127.0	152.0		9.5
3 1/2"	102	139.7	152.0		9.5
4"	114	157.2	152.0		11.1
5"	141	185.7	203.0		11.1
6"	168	215.9	203.0		12.7
8"	219	269.7	203.0		12.7
10"	273	323.9	254.0		12.7
12"	324	381.0	254.0		12.7
14"	356	412.8	305.0		12.7
16"	406	469.9	305.0		12.7
18"	457	533.4	305.0		12.7
20"	508	584.2	305.0		12.7
22"	559	641.4	305.0		12.7
24"	610	692.2	305.0		12.7