

Data Sheet

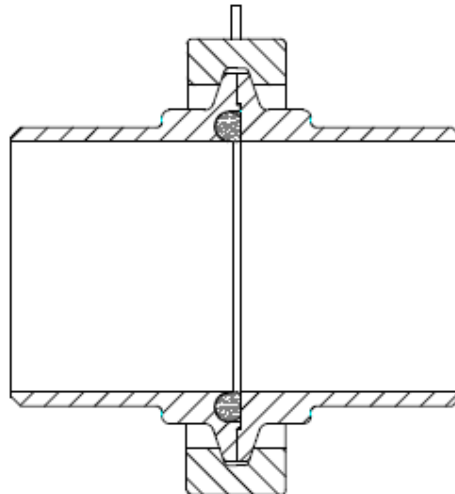
DIN 11864-3 Aseptic Clamp Unions for BS 4825 / ISO 2037 & ASME BPE 2002

DIN 11864 -3 Aseptic Clamp Unions

This range of aseptic fittings has been developed by the German hygienic industry to meet the exacting needs of the pharmaceutical, food and fine chemical industries.

Three designs of pipe fittings have been tailored to accept 2 different types of aseptic seals that effect a smooth interface within the pipe work whilst simultaneously achieving a metal to metal seat behind the joint.

The seal sections used are referenced as "Form A" and "Form B" and both have distinctive profiles that are easily recognised. Form A is an O Ring Joint whilst Form B is a 2-part Square section seal with a secondary internal diamond section.



The Type 3 design is based on the 3A Clamp union and uses the flange diameters common to the Metric DIN 32676 Standard.

Available with optional lengths to suit Orbital and Manual Welding, these unions have been designed to match tube and pipe specifications including DIN 11850 / 11866; ISO 2037; ASME BPE 2002 and BS 4825 Part 1 and also the ISO 1127 Standard for schedule pipe.

Size range: ½" to 4"

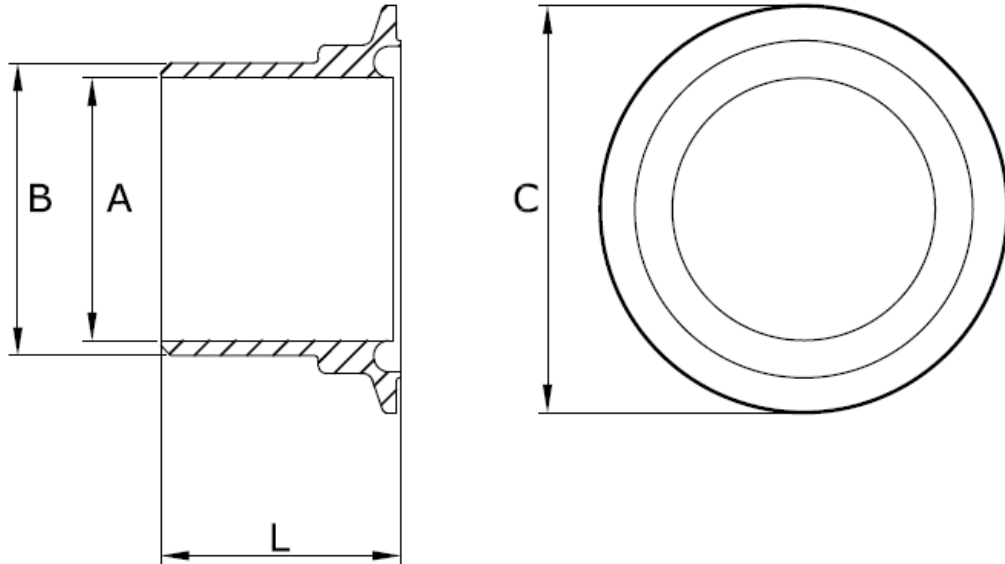
Materials: 316L SS.

Related standards:

DIN 11864-1 Form A – Aseptic Screwed Union
DIN 11864-2 Form A - Aseptic Flange Union
DIN 11864-3 Form A - Aseptic Clamp Union
DIN 11866 / 11850
ISO1127
ISO 2037 / BS 4825 /ASME BPE 2002
DIN 11853 (Type 1 only)

Data Sheet

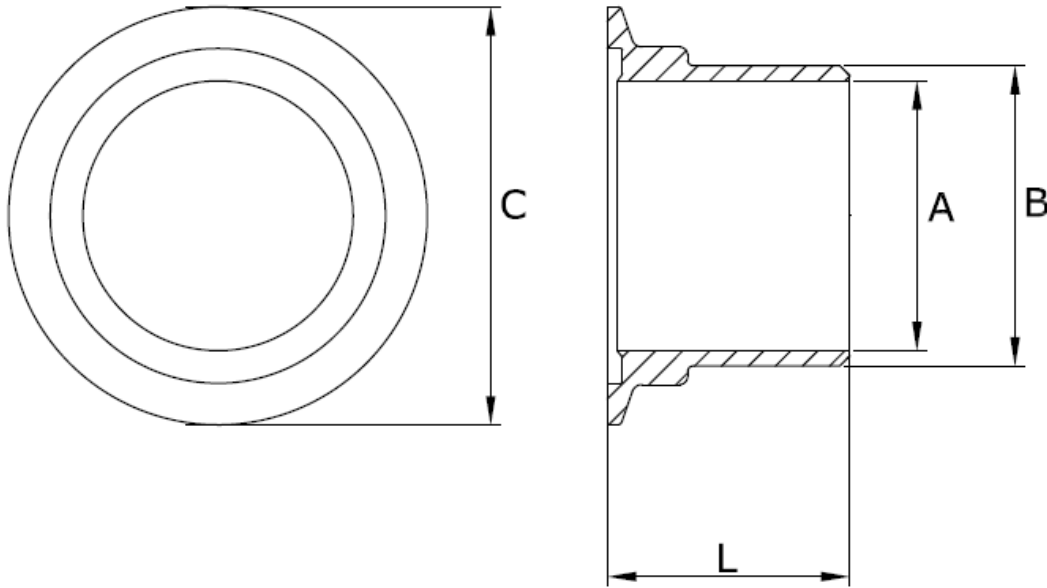
**DIN11864-3 "Form A" Clamp Ferrule Male, 316L SS,
BS 4825 / ISO 2037 & ASME BPE 2002**



Size:	A	B	C	L1 (Orbital Weld)	L2 (Manual Weld)	Detail
½"	9.4	12.7	34.0	39.5	18.5	A0140-A013
¾"	15.8	19.1	34.0	39.5	18.5	A0140-A019
1"	22.1	25.4	50.5	40.0	19.0	A0140-A026
1 ½"	34.8	38.1	64.0	45.5	25.5	A0140-A038
2"	47.5	50.8	77.5	46.0	29.0	A0140-A051
2 ½"	60.2	63.5	91.0	59.0	32.0	A0140-A064
3"	72.9	76.2	106.0	60.0	37.0	A0140-A076
4"	97.4	101.6	130.0	61.0	43.0	A0140-A102

Data Sheet

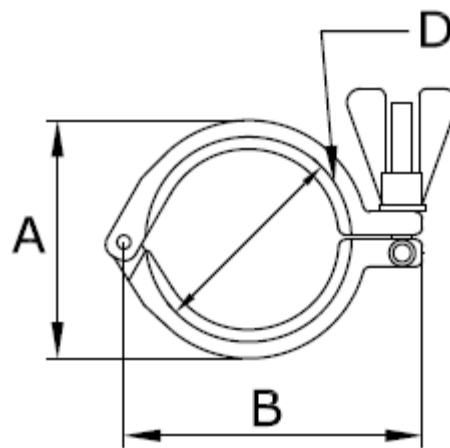
**DIN11864-3 "Form A" Clamp Ferrule Female, 316L SS,
BS 4825 / ISO 2037 & ASME BPE 2002**



Size:	A	B	C	L1 (Orbital Weld)	L2 (Manual Weld)	Detail
1/2"	9.4	12.7	34.0	38.0	17.0	A141-A013
3/4"	15.8	19.1	34.0	38.0	17.0	A141-A019
1"	22.1	25.4	50.5	38.5	17.5	A141-A026
1 1/2"	34.8	38.1	64.0	44.0	24.0	A141-A038
2"	47.5	50.8	77.5	44.5	27.5	A141-A051
2 1/2"	60.2	63.5	91.0	57.2	30.5	A141-A064
3"	72.9	76.2	106.0	58.5	35.5	A141-A076
4"	97.4	101.6	130.0	59.2	41.5	A141-A102

Data Sheet

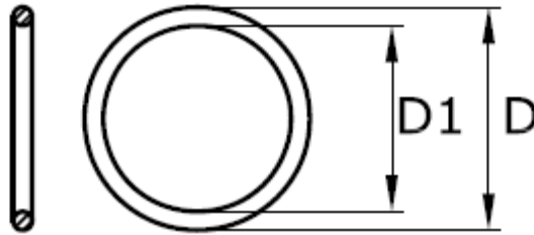
**DIN11864-3 Clamp, 304 SS,
 BS 4825 / ISO 2037 & ASME BPE 2002**



Size:	A	B	C	D	Part No:
1/2"	45	63		34	3017-C015
3/4"	45	63		34	3017-C015
1"	64	88		50.5	3017-C026
1 1/2"	77	105		64	3017-C051
2"	91	123		77.5	3017-C064
2 1/2"	104	137		91	3017-C076
3"	119	155		106	3017-C089
4"	143	176		130	3017-C114

Data Sheet

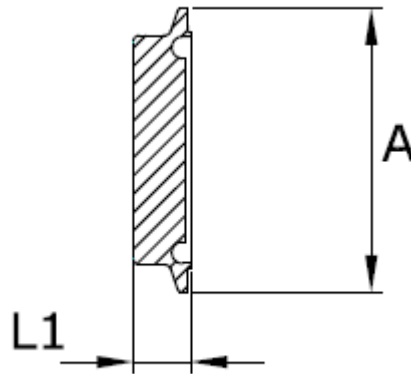
**DIN11864-1 "Form A " O Ring Union Seal,
BS 4825 / ISO 2037 & ASME BPE 2002**



Size:	D1	D	Section	Part No: EPDM	Part No: Viton	Detail
DN 10	12	19	3.5	A030-E010	A030-V010	
DN 15	18	25	3.5	A030-E015	A030-V015	
DN 20	22	29	3.5	A030-E020	A030-V020	
DN 25	28	35	3.5	A030-E025	A030-V025	
DN 32	34	44	5	A030-E032	A030-V032	
DN 40	40	50	5	A030-E040	A030-V040	
DN 50	52	62	5	A030-E050	A030-V050	
DN 65	68	78	5	A030-E065	A030-V065	
DN 80	83	93	5	A030-E080	A030-V080	
DN 100	102	112	5	A030-E100	A030-V100	
DN 125	127	137	5	A030-E125	A030-V125	
DN 150	152	162	5	A030-E150	A030-V150	

Data Sheet

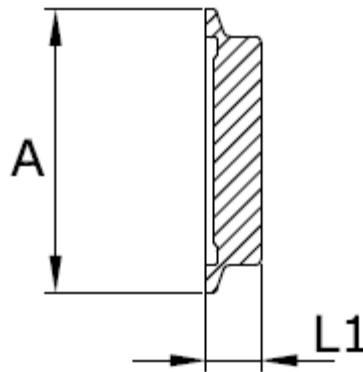
**DIN11864-3 "Form A " Clamp Blank Male, 316L SS
BS 4825 / ISO 2037 & ASME BPE 2002**



Size:	A	L1	C	Part No:	Detail
1/2"	34.0	10		A142-A015	
3/4"	34.0	10		A142-A015	
1"	50.5	10		A142-A026	
1 1/2"	64.0	10		A142-A051	
2"	77.5	10		A142-A064	
2 1/2"	91.0	10		A142-A076	
3"	106.0	10		A142-A089	
4"	130.0	10		A142-A114	

Data Sheet

**DIN11864-3 "Form A " Clamp Blank Female, 316L SS
BS 4825 / ISO 2037 & ASME BPE 2002**



Size:	A	B	C	Part No:	Detail
1/2"	34.0	8		A143-A015	
3/4"	34.0	8		A143-A015	
1"	50.5	8		A143-A026	
1 1/2"	64.0	8		A143-A051	
2"	77.5	8		A143-A064	
2 1/2"	91.0	8		A143-A076	
3"	106.0	8		A143-A089	
4"	130.0	8		A143-A114	