

Data Sheet

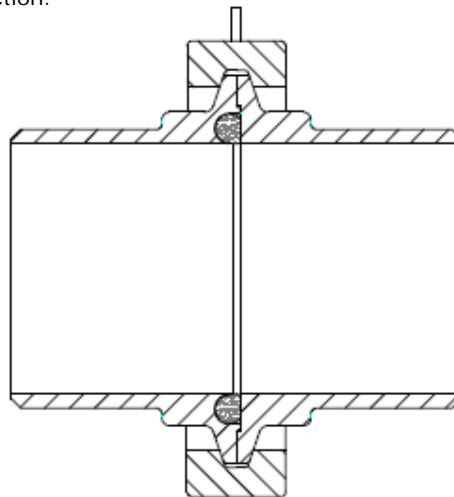
DIN 11864-3 Aseptic Clamp Unions for ISO 1127 Schedule Pipe

DIN 11864 - 3 Aseptic Clamp Unions

This range of aseptic fittings has been developed by the German hygienic industry to meet the exacting needs of the pharmaceutical, food and fine chemical industries.

Three designs of pipe fittings have been tailored to accept 2 different types of aseptic seals that effect a smooth interface within the pipe work whilst simultaneously achieving a metal to metal seat behind the joint.

The seal sections used are referenced as "Form A" and "Form B" and both have distinctive profiles that are easily recognised. Form A is an O Ring Joint whilst Form B is a 2-part Square section seal with a secondary internal diamond section.



The Type 3 design is based on the 3A Clamp union and uses the flange diameters common to the Metric DIN 32676 Standard.

Available with optional lengths to suit Orbital and Manual Welding, these unions have been designed to match tube and pipe specifications including DIN 11850 / 11866; ISO 2037; ASME BPE 2002 and BS 4825 Part 1 and also the ISO 1127 Standard for schedule pipe.

Size range: NS8 to NS80

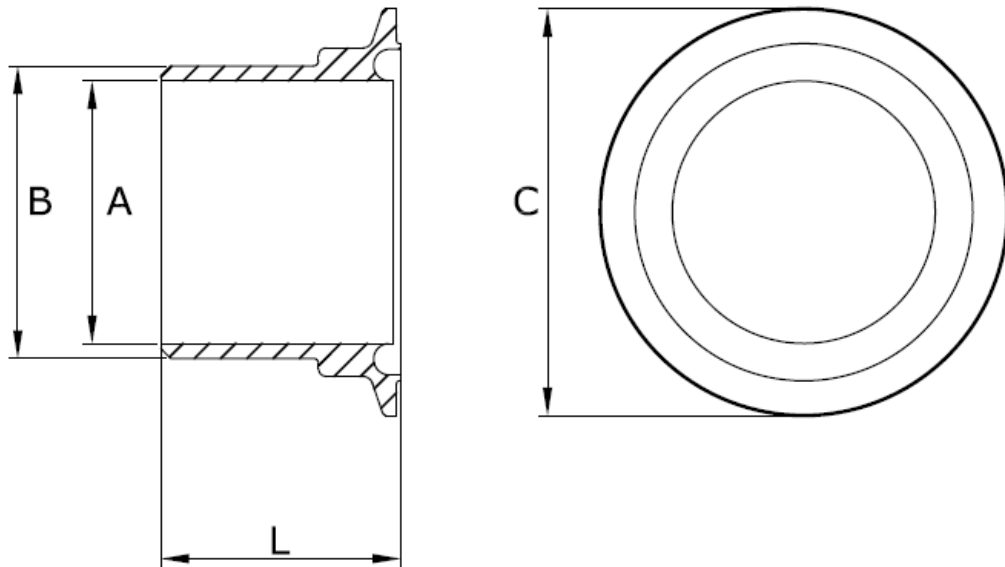
Materials: 316L SS.

Related standards:

DIN 11864-1 Form A - Aseptic Screwed Union
DIN 11864-2 Form A - Aseptic Flange Union
DIN 11864-3 Form A - Aseptic Clamp Union
DIN 11866 / 11850
ISO1127
ISO 2037 / BS 4825 /ASME BPE 2002
DIN 11853 (Type 1 only)

Data Sheet

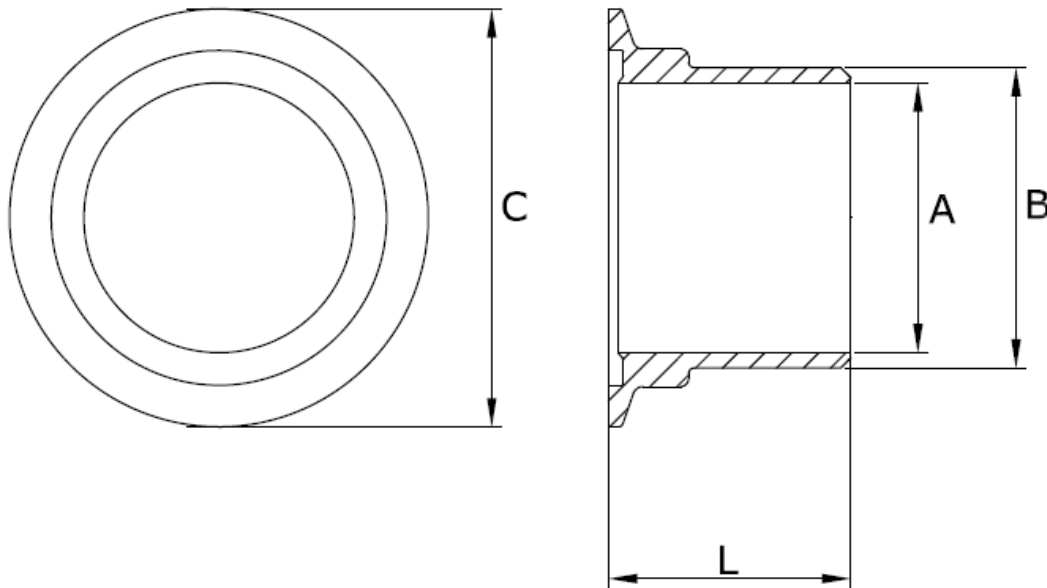
**DIN11864-3 "Form A" Clamp Ferrule Male, 316L SS,
ISO 1127 Schedule Pipe**



Size:	A	B	C	L1 (Orbital Weld)	L2 (Manual Weld)	Detail
NS 8	10.3	13.5	34.0	39.5	18.5	A0140-A0135
NS 10	14.0	17.2	34.0	39.5	18.5	A0140-A0172
NS 15	18.1	21.3	34.0	40.5	19.5	A0140-A0213
NS 20	23.7	26.9	50.5	40.0	17.0	A0140-A0269
NS 25	29.7	33.7	50.5	45.5	24.5	A0140-A0337
NS 32	38.4	42.4	64.0	45.5	26.5	A0140-A0424
NS 40	44.3	48.3	64.0	46.5	28.5	A0140-A0483
NS 50	56.3	60.3	91.0	58.5	30.5	A0140-A0603
NS 65	72.1	76.1	106.0	60.0	37.0	A0140-A0761
NS 80	84.3	88.9	119.0	62.5	40.5	A0140-A0889

Data Sheet

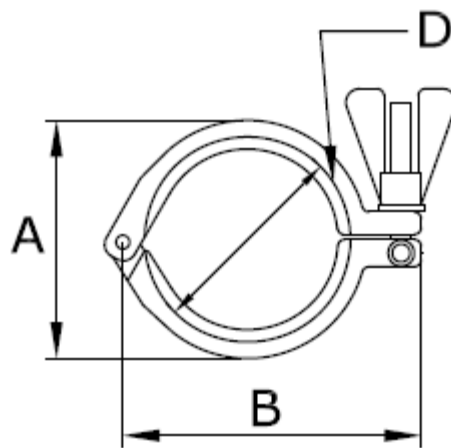
**DIN11864-3 "Form A" Clamp Ferrule Female, 316L SS,
ISO 1127 Schedule Pipe**



Size:	A	B	C	L1 (Orbital Weld)	L2 (Manual Weld)	Detail
NS 8	10.3	13.5	34.0	38.0	17.0	A141-A0135
NS 10	14.0	17.2	34.0	38.0	17.0	A141-A0172
NS 15	18.1	21.3	34.0	38.0	18.0	A141-A0213
NS 20	23.7	26.9	50.5	38.0	16.0	A141-A0269
NS 25	29.7	33.7	50.5	38.5	23.0	A141-A0337
NS 32	38.4	42.4	64.0	44.0	25.0	A141-A0424
NS 40	44.3	48.3	64.0	44.0	27.0	A141-A0483
NS 50	56.3	60.3	91.0	44.5	29.0	A141-A0603
NS 65	72.1	76.1	106.0	56.5	35.5	A141-A0761
NS 80	84.3	88.9	119.0	58.5	39.0	A141-A0889

Data Sheet

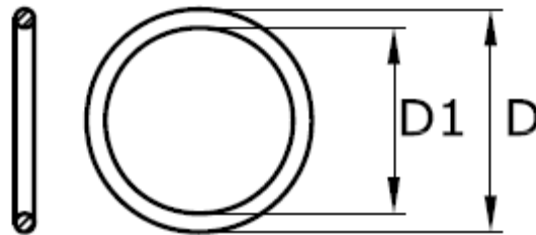
**DIN11864-3 Clamp, 304 SS,
ISO 1127 Schedule Pipe**



Size:	A	B	C	D	Part No:
NS 8	45.0	63.0		34.0	3017-C015
NS 10	45.0	63.0		34.0	3017-C015
NS 15	45.0	63.0		34.0	3017-C015
NS 20	64.0	88.0		50.5	3017-C026
NS 25	64.0	88.0		50.5	3017-C026
NS 32	77.0	105.0		64.0	3017-C051
NS 40	77.0	105.0		64.0	3017-C051
NS 50	104.0	137.0		91.0	3017-C076
NS 65	119.0	155.0		106.0	3017-C089
NS 80	132.0	168.0		119.0	3017-C102

Data Sheet

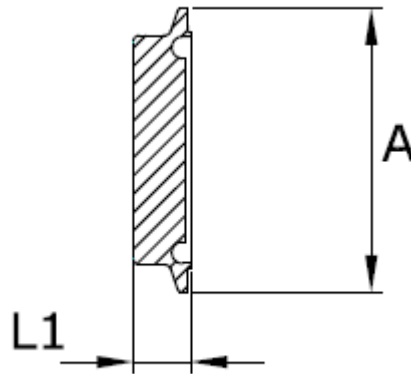
**DIN11864-1 "Form A " O Ring Union Seal,
ISO 1127 Schedule Pipe**



Size:	D1	D	Section	Part No: EPDM	Part No: Viton	Detail
NS 10	12	19	3.5	A030-E010	A030-V010	
NS 15	18	25	3.5	A030-E015	A030-V015	
NS 20	22	29	3.5	A030-E020	A030-V020	
NS 25	28	35	3.5	A030-E025	A030-V025	
NS 32	34	44	5	A030-E032	A030-V032	
NS 40	40	50	5	A030-E040	A030-V040	
NS 50	52	62	5	A030-E050	A030-V050	
NS 65	68	78	5	A030-E065	A030-V065	
NS 80	83	93	5	A030-E080	A030-V080	
NS 100	102	112	5	A030-E100	A030-V100	
NS 125	127	137	5	A030-E125	A030-V125	
NS 150	152	162	5	A030-E150	A030-V150	

Data Sheet

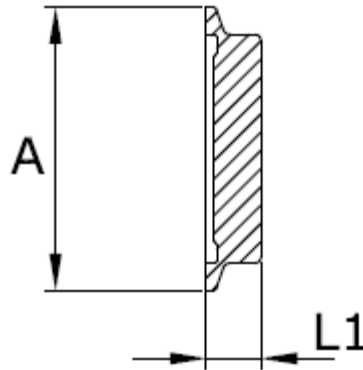
**DIN11864-3 "Form A " Clamp Blank Male, 316L SS
ISO 1127 Schedule Pipe**



Size:	A	L1	C	Part No:	Detail
NS 8	34.0	10		A142-A0135	
NS 10	34.0	10		A142-A0172	
NS 15	34.0	10		A142-A0213	
NS 20	50.5	10		A142-A0269	
NS 25	50.5	10		A142-A0337	
NS 32	64.0	10		A142-A0424	
NS 40	64.0	10		A142-A0483	
NS 50	91.0	10		A142-A0603	
NS 65	106.0	10		A142-A0761	
NS 80	119.0	10		A142-A0889	

Data Sheet

**DIN11864-3 "Form A " Clamp Blank Female, 316L SS
ISO 1127 Schedule Pipe**



Size:	A	L1	C	Part No:	Detail
NS 8	34.0	8		A143-A0135	
NS 10	34.0	8		A143-A0172	
NS 15	34.0	8		A143-A0213	
NS 20	50.5	8		A143-A0269	
NS 25	50.5	8		A143-A0337	
NS 32	64.0	8		A143-A0424	
NS 40	64.0	8		A143-A0483	
NS 50	91.0	8		A143-A0603	
NS 65	106.0	8		A143-A0761	
NS 80	119.0	8		A143-A0889	