

**Data Sheet**

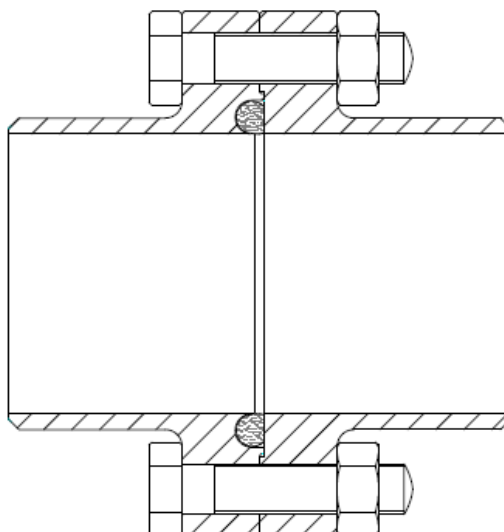
## DIN 11864-2 Aseptic Flange Union for ISO 1127 Schedule Pipe

### DIN 11864 - 2 Aseptic Flange Union

This range of aseptic fittings has been developed by the German hygienic industry to meet the exacting needs of the food, chemical and pharmaceutical industries.

Three designs of pipe fittings have been tailored to accept 2 different styles of aseptic seals that effect a smooth interface within the pipe work whilst simultaneously achieving a metal to metal seat behind the joint.

The seal sections used are referenced as "Form A" and "Form B" and both have distinctive profiles that are easily recognised. Form A is an O Ring Joint whilst Form B is a 2-part Square seal with a secondary internal diamond section.



Available with optional lengths to suit Orbital and Manual Welding, these unions have been designed to match tube and pipe specifications in DIN 11850; ISO 2037, ASME BPE 2002 and BS 4825 Part 1 and also ISO 1127 for schedule pipe.

Size range: DN8 to DN100

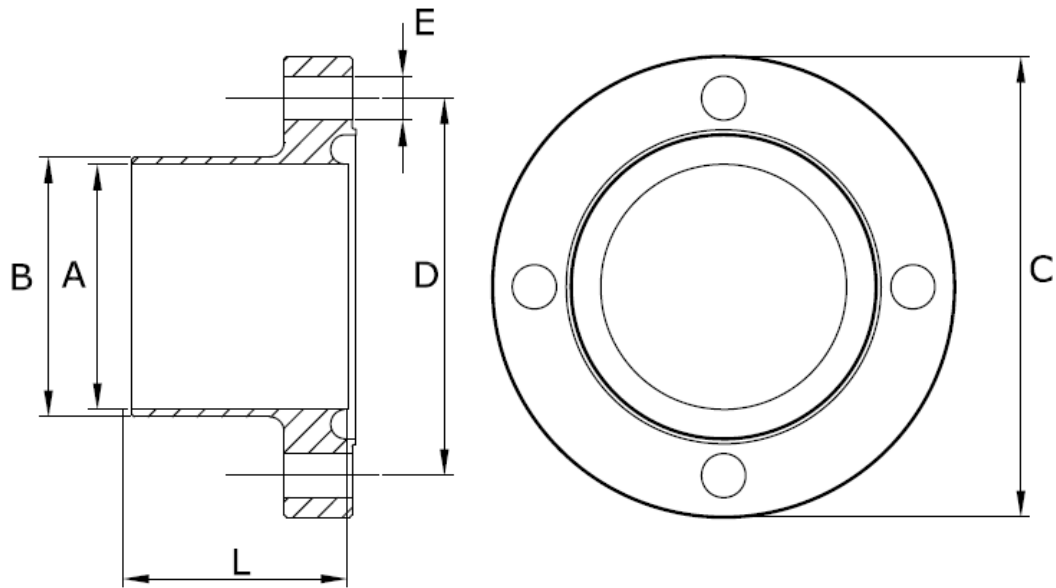
Materials: 316L SS

**Related standards:**

DIN 11864-1 Form A - Aseptic Screwed Union  
DIN 11864-2 Form A - Aseptic Flange Union  
DIN 11864-3 Form A - Aseptic Tri-Clamp Union  
DIN 11866 / 11850  
ISO1127  
ISO 2037 / BS 4825 /ASME BPE 2002  
DIN 11853 (Type 1 only)

**Data Sheet**

**A06E - DIN11864-2 "Form A" Male Nut Flange, 316L SS, ISO 1127**

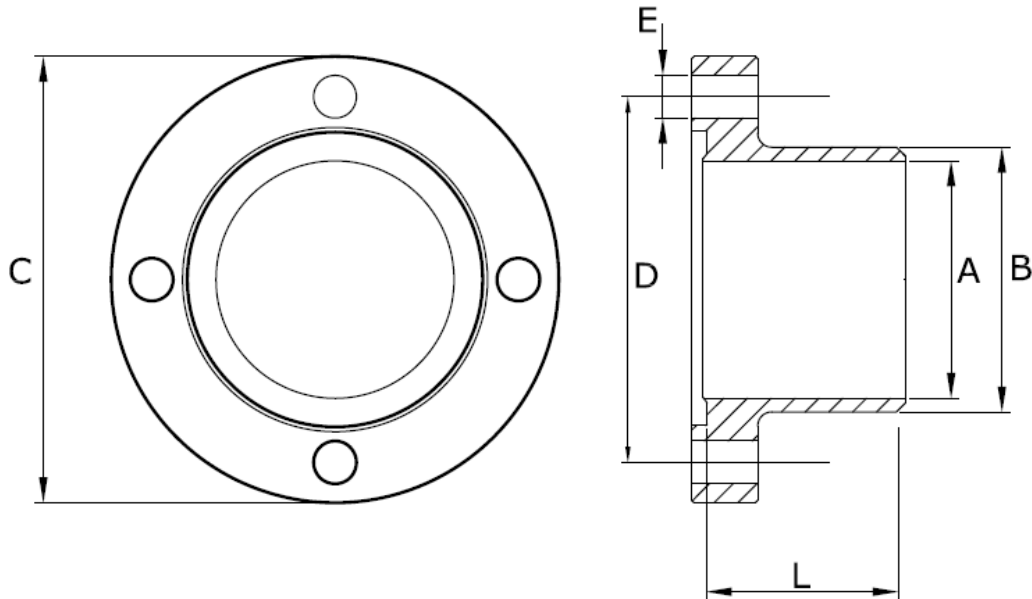


Size:	A	B	C	L1 (Orbital Weld)	L2 (Manual Weld)	D x E Hole Detail
DN 8	10.3	13.5	54	41.5	25.5	37 PCD ( 4 x Ø 9 )
DN 10	14.0	17.2	59	41.5	25.5	42 PCD ( 4 x Ø 9 )
DN 15	18.1	21.3	62	41.5	25.5	45 PCD ( 4 x Ø 9 )
DN 20	23.7	26.9	69	41.5	25.5	52 PCD ( 4 x Ø 9 )
DN 25	29.7	33.7	74	46.5	25.5	57 PCD ( 4 x Ø 9 )
DN 32	38.4	42.4	82	46.5	25.5	65 PCD ( 4 x Ø 9 )
DN 40	44.3	48.3	88	46.5	25.5	71 PCD ( 4 x Ø 9 )
DN 50	56.3	60.3	103	55.5	25.5	85 PCD ( 4 x Ø 9 )
DN 65	72.1	76.1	125	57.5	25.5	104 PCD ( 8 x Ø11 )
DN 80	84.3	88.9	137	59.5	27.5	116 PCD ( 8 x Ø 11 )
DN 100	109.7	114.3	168	59.5	27.5	146 PCD ( 8 x Ø 11 )

**Dimension "L" includes the sealing face raised spigot**

**Data Sheet**

**A06F - DIN11864-2 "Form A" Female Liner Flange, 316L SS.  
ISO 1127**

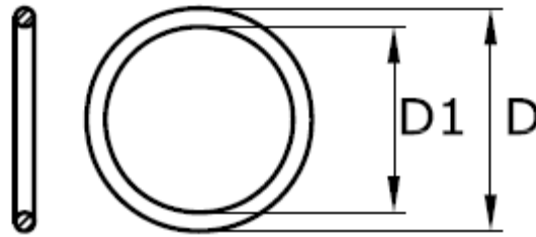


Size:	A	B	C	L1 (Orbital Weld)	L2 (Manual Weld)	D x E Hole Detail
DN 8	10.3	13.5	54	40	24	37 PCD ( 4 x Ø 9 )
DN 10	14.0	17.2	59	40	24	42 PCD ( 4 x Ø 9 )
DN 15	18.1	21.3	62	40	24	45 PCD ( 4 x Ø 9 )
DN 20	23.7	26.9	69	40	24	52 PCD ( 4 x Ø 9 )
DN 25	29.7	33.7	74	45	24	57 PCD ( 4 x Ø 9 )
DN 32	38.4	42.4	82	45	24	65 PCD ( 4 x Ø 9 )
DN 40	44.3	48.3	88	45	24	71 PCD ( 4 x Ø 9 )
DN 50	56.3	60.3	103	54	24	85 PCD ( 4 x Ø 9 )
DN 65	72.1	76.1	125	56	24	104 PCD ( 8 x Ø 11 )
DN 80	84.3	88.9	137	58	26	116 PCD ( 8 x Ø 11 )
DN 100	109.7	114.3	168	58	26	146 PCD ( 8 x Ø 11 )

**Dimension "L" includes the sealing face raised spigot**

**Data Sheet**

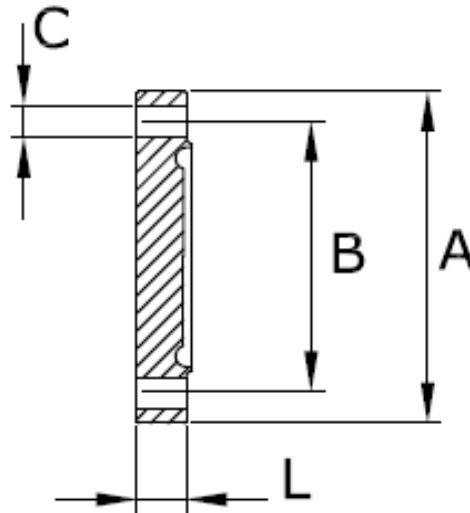
**DIN11864-2 "Form A" O Ring Union Seal,  
ISO 1127**



Size:	D1	D	Section	Part No: EPDM	Part No: Viton	Detail
DN 8	12.0	19.0	3.5	A030-E0135	A030-V0135	
DN 10	16.0	23.0	3.5	A030-E0172	A030-V0172	
DN 15	20.0	27.0	3.5	A030-E0213	A030-V0213	
DN 20	26.0	33.0	3.5	A030-E0269	A030-V0269	
DN 25	32.0	42.0	5.0	A030-E0337	A030-V0337	
DN 32	40.5	50.5	5.0	A030-E0424	A030-V0424	
DN 40	46.5	56.5	5.0	A030-E0483	A030-V0483	
DN 50	58.5	68.5	5.0	A030-E0603	A030-V0603	
DN 65	73.5	83.5	5.0	A030-E0761	A030-V0761	
DN 80	86.5	96.5	5.0	A030-E0889	A030-V0889	
DN100	111.0	121.0	5.0	A030-E1143	A030-V1143	

**Data Sheet**

**A06G - DIN11864-2 "Form A" Male Nut Flange Blank,  
316L SS, ISO 1127**

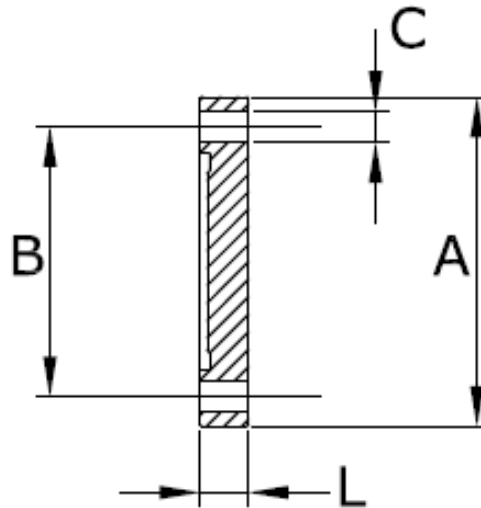


Size:	A	B	C	L	Part No:	Detail
DN 8	54	37	4 x Ø9	11.5	A06G-A0135	
DN 10	59	42	4 x Ø9	11.5	A06G-A0172	
DN 15	62	45	4 x Ø9	11.5	A06G-A0213	
DN 20	69	52	4 x Ø9	11.5	A06G-A0269	
DN 25	74	57	4 x Ø9	11.5	A06G-A0337	
DN 32	82	65	4 x Ø9	11.5	A06G-A0424	
DN 40	88	71	4 x Ø9	11.5	A06G-A0463	
DN 50	103	85	4 x Ø9	11.5	A06G-A0603	
DN 65	125	104	8 x Ø11	13.5	A06G-A0761	
DN 80	137	116	8 x Ø11	13.5	A06G-A0889	
DN 100	168	146	8 x Ø11	15.5	A06G-A1143	

**Dimension "L" includes the sealing face raised spigot**

**Data Sheet**

**A06H - DIN11864-2 "Form A" Female Liner Flange Blank,  
316L SS, ISO 1127**



Size:	A	B	C	L	Part No:	Detail
DN 8	54	37	4 x Ø9	10	A06H-A0135	
DN 10	59	42	4 x Ø9	10	A06H-A0172	
DN 15	62	45	4 x Ø9	10	A06H-A0213	
DN 20	69	52	4 x Ø9	10	A06H-A0269	
DN 25	74	57	4 x Ø9	10	A06H-A0337	
DN 32	82	65	4 x Ø9	10	A06H-A0424	
DN 40	88	71	4 x Ø9	10	A06H-A0463	
DN 50	103	85	4 x Ø9	10	A06H-A0603	
DN 65	125	104	8 x Ø11	12	A06H-A0761	
DN 80	137	116	8 x Ø11	12	A06H-A0889	
DN 100	168	146	8 x Ø11	14	A06H-A1143	

**Dimension "L" includes the sealing face raised spigot**