

Data Sheet

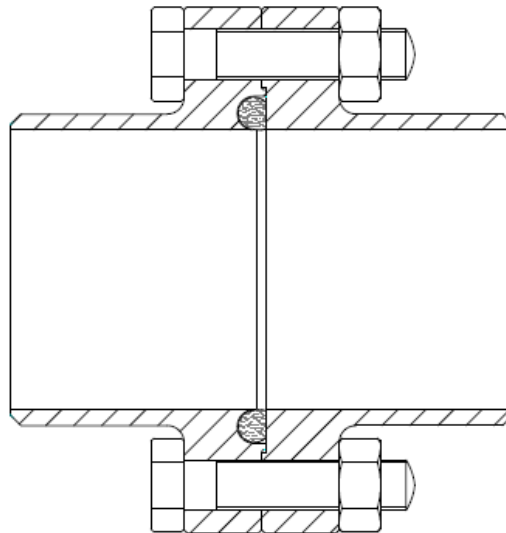
DIN 11864-2 Aseptic Flange Union for BS 4825 / ISO 2037 & ASME BPE 2002

DIN 11864 - 2 Aseptic Flange Union

This range of aseptic fittings has been developed by the German hygienic industry to meet the exacting needs of the food, chemical and pharmaceutical industries.

Three designs of pipe fittings have been tailored to accept 2 different styles of aseptic seals that effect a smooth interface within the pipe work whilst simultaneously achieving a metal to metal seat behind the joint.

The seal sections used are referenced as "Form A" and "Form B" and both have distinctive profiles that are easily recognised. Form A is an O Ring Joint whilst Form B is a 2-part Square seal with a secondary internal diamond section.



Available with optional lengths to suit Orbital and Manual Welding, these unions have been designed to match tube and pipe specifications in DIN 11850; ISO 2037, ASME BPE 2002 and BS 4825 Part 1 and also ISO 1127 for schedule pipe.

Size range: ½" to 4"

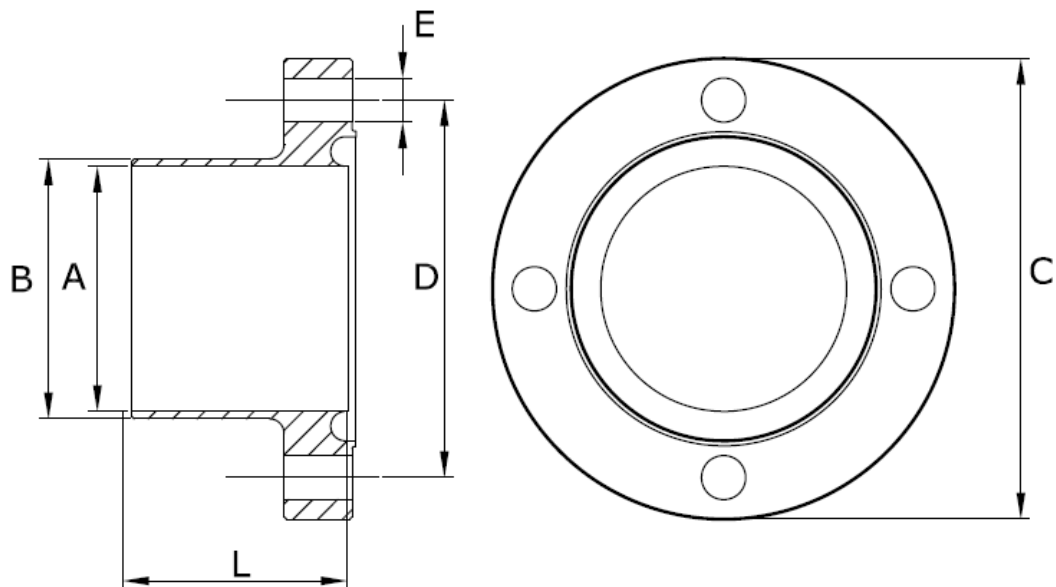
Materials: 316L SS

Related standards:

DIN 11864-1 Form A - Aseptic Screwed Union
DIN 11864-2 Form A - Aseptic Flange Union
DIN 11864-3 Form A - Aseptic Tri-Clamp Union
DIN 11866 / 11850
ISO1127
ISO 2037 / BS 4825 /ASME BPE 2002
DIN 11853 (Type 1 only)

Data Sheet

**A06E - DIN11864-2 "Form A" Male Nut Flange, 316L SS,
BS4825 / ISO 2037 / ASME BPE 2002**

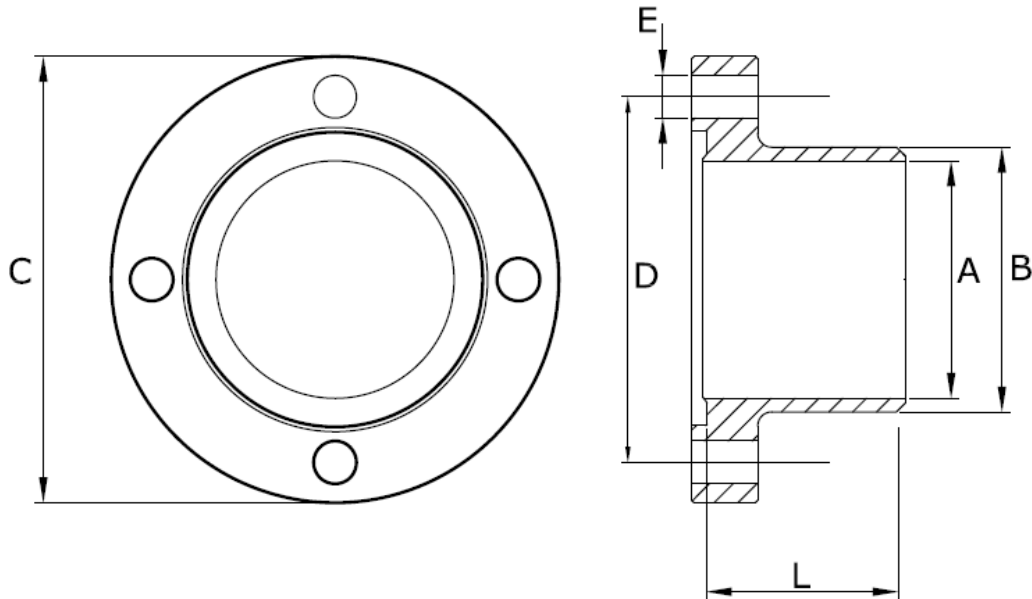


Size:	A	B	C	L1 (Orbital Weld)	L2 (Manual Weld)	D x E Hole Detail
1/2"	9.4	12.7	54	41.5	25.5	37 PCD (4 x Ø 9)
3/4"	15.8	19.1	59	41.5	25.5	42 PCD (4 x Ø 9)
1"	22.1	25.4	66	41.5	25.5	49 PCD (4 x Ø 9)
1 1/2"	34.8	38.1	79	46.5	25.5	62 PCD (4 x Ø 9)
2"	47.5	50.8	92	46.5	25.5	75 PCD (4 x Ø 9)
2 1/2"	60.2	63.5	107	55.5	25.5	89 PCD (8 x Ø 9)
3"	72.9	76.2	125	57.5	25.5	104 PCD (8 x Ø 11)
4"	97.4	101.6	157	59.5	27.5	135 PCD (8 x Ø 11)

Dimension "L" includes the sealing face raised spigot

Data Sheet

**A06F - DIN11864-2 "Form A" Female Liner Flange, 316L SS.
BS4825 / ISO 2037 / ASME BPE 2002**

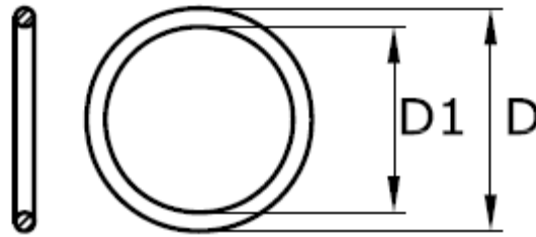


Size:	A	B	C	L1 (Orbital Weld)	L2 (Manual Weld)	D x E Hole Detail
1/2"	9.4	12.7	54	40	24	37 PCD (4 x Ø 9)
3/4"	15.8	19.1	59	40	24	42 PCD (4 x Ø 9)
1"	22.1	25.4	66	40	24	49 PCD (4 x Ø 9)
1 1/2"	34.8	38.1	79	45	24	62 PCD (4 x Ø 9)
2"	47.5	50.8	92	45	24	75 PCD (4 x Ø 9)
2 1/2"	60.2	63.5	107	54	24	89 PCD (8 x Ø 9)
3"	72.9	76.2	125	56	24	104 PCD (8 x Ø 11)
4"	97.4	101.6	157	58	26	135 PCD (8 x Ø 11)

Dimension "L" includes the sealing face raised spigot

Data Sheet

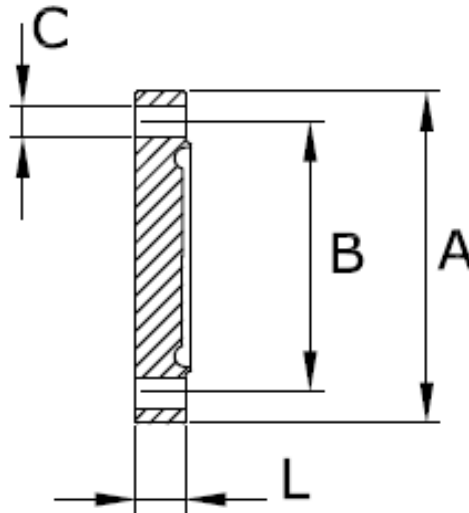
**DIN11864-2 "Form A" O Ring Union Seal,
BS4825 / ISO 2037 / ASME BPE 2002**



Size:	D1	D	Section	Part No: EPDM	Part No: Viton	Detail
1/2"	12	19	3.5	A030-E013	A030-V013	
3/4"	18	25	3.5	A030-E019	A030-V019	
1"	24	31	3.5	A030-E025	A030-V025	
1 1/2"	37	44	3.5	A030-E038	A030-V038	
2"	50	60	5	A030-E051	A030-V051	
2 1/2"	62	72	5	A030-E064	A030-V064	
3"	75	85	5	A030-E076	A030-V076	
4"	100	110	5	A030-E102	A030-V102	

Data Sheet

**A06G - DIN11864-2 "Form A" Male Nut Flange Blank,
316L SS, BS4825 / ISO 2037 / ASME BPE 2002**

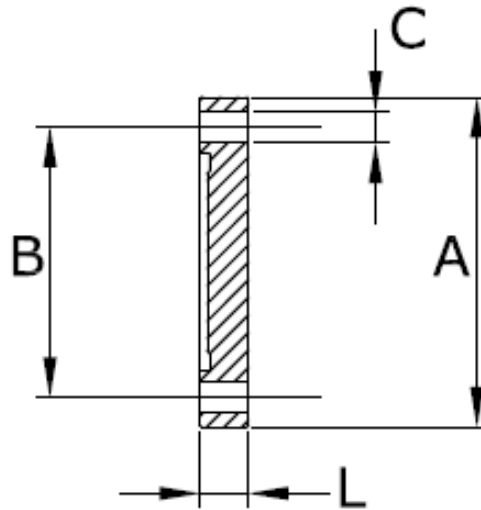


Size:	A	B	C	L	Part No:	Detail
1/2"	54	37	4 x Ø9	11.5	A06G	
3/4"	59	42	4 x Ø9	11.5	A06G	
1"	66	49	4 x Ø9	11.5	A06G	
1 1/2"	79	62	4 x Ø9	11.5	A06G	
2"	92	75	4 x Ø9	11.5	A06G	
2 1/2"	107	89	8 x Ø9	11.5	A06G	
3"	125	104	8 x Ø11	13.5	A06G	
4"	157	135	8 x Ø11	15.5	A06G	

Dimension "L" includes the sealing face raised spigot

Data Sheet

**A06H - DIN11864-2 "Form A" Female Liner Flange Blank,
316L SS, BS4825 / ISO 2037 / ASME BPE 2002**



Size:	A	B	C	L	Part No:	Detail
1/2"	54	37	4 x Ø9	10	A06H-A013	
3/4"	59	42	4 x Ø9	10	A06HA019	
1"	66	49	4 x Ø9	10	A06H-A026	
1 1/2"	79	62	4 x Ø9	10	A06H-A038	
2"	92	75	4 x Ø9	10	A06H-A051	
2 1/2"	107	89	8 x Ø9	10	A06H-A064	
3"	125	104	8 x Ø11	12	A06H-A076	
4"	157	135	8 x Ø11	14	A06H-A102	

Dimension "L" includes the sealing face raised spigot