

**Data Sheet**

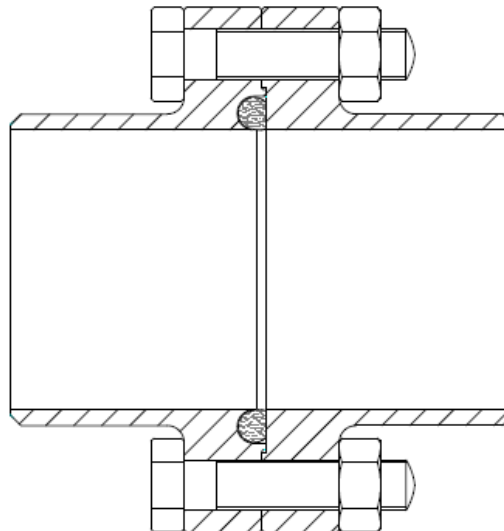
## DIN 11864-2 Aseptic Flange Union for DIN 11866 / 11850

### DIN 11864 - 2 Aseptic Flange Union

This range of aseptic fittings has been developed by the German hygienic industry to meet the exacting needs of the food, chemical and pharmaceutical industries.

Three designs of pipe fittings have been tailored to accept 2 different styles of aseptic seals that effect a smooth interface within the pipe work whilst simultaneously achieving a metal to metal seat behind the joint.

The seal sections used are referenced as "Form A" and "Form B" and both have distinctive profiles that are easily recognised. Form A is an O Ring Joint whilst Form B is a 2-part Square seal with a secondary internal diamond section.



Available with optional lengths to suit Orbital and Manual Welding, these unions have been designed to match tube and pipe specifications in DIN 11850; ISO 2037, ASME BPE 2002 and BS 4825 Part 1 and also ISO 1127 for schedule pipe.

Size range: 10mm to 150mm

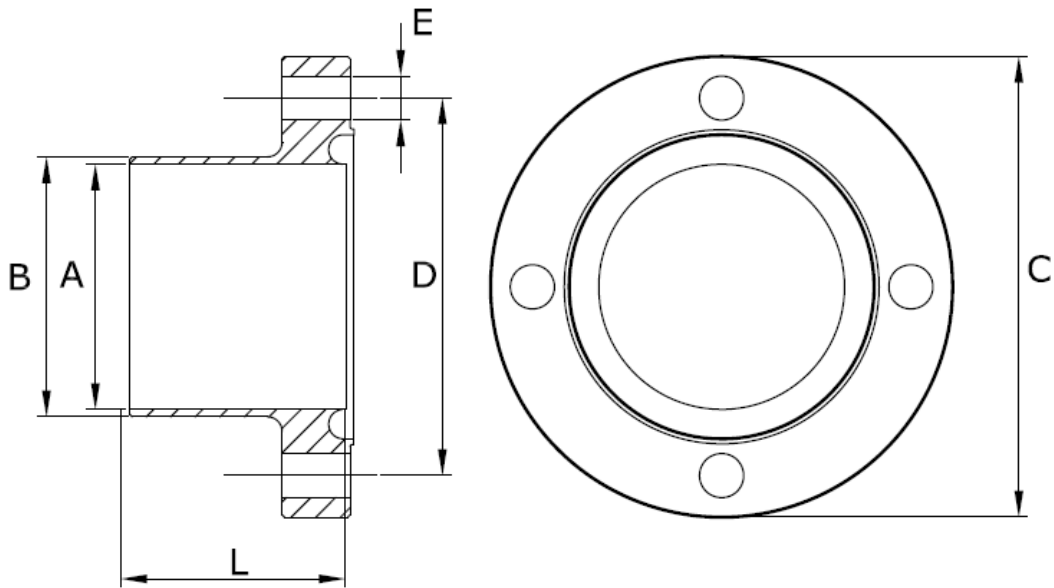
Materials: 316L SS

**Related standards:**

DIN 11864-1 Form A - Aseptic Screwed Union  
DIN 11864-2 Form A - Aseptic Flange Union  
DIN 11864-3 Form A - Aseptic Tri-Clamp Union  
DIN 11866 / 11850  
ISO1127  
ISO 2037 / BS 4825 /ASME BPE 2002  
DIN 11853 (Type 1 only)

**Data Sheet**

**A06E - DIN11864-2 "Form A" Male Nut Flange, 316L SS,  
DIN 11866 / DIN 11850**

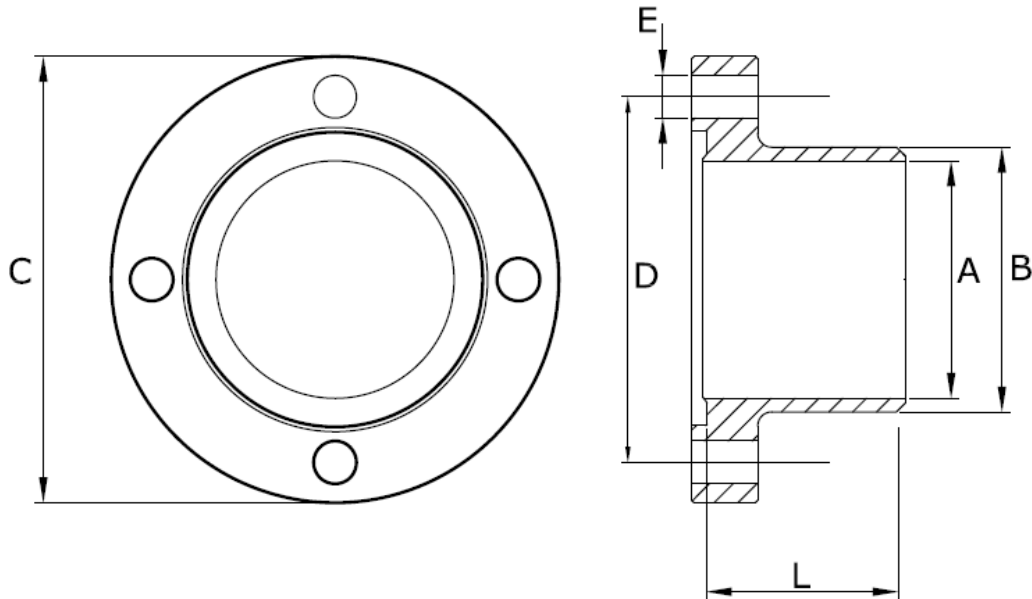


Size:	A	B	C	L1 (Orbital Weld)	L2 (Manual Weld)	D x E Hole Detail
DN 10	10	13	54	41.5	25.5	37 PCD ( 4 x Ø 9 )
DN 15	16	19	59	41.5	25.5	42 PCD ( 4 x Ø 9 )
DN 20	20	23	64	41.5	25.5	47 PCD ( 4 x Ø 9 )
DN 25	26	29	70	41.5	25.5	53 PCD ( 4 x Ø 9 )
DN 32	32	35	76	46.5	25.5	59 PCD ( 4 x Ø 9 )
DN 40	38	41	82	46.5	25.5	65 PCD ( 4 x Ø 9 )
DN 50	50	53	94	46.5	25.5	77 PCD ( 4 x Ø 9 )
DN 65	66	70	113	55.5	25.5	95 PCD ( 8 x Ø 9 )
DN 80	81	85	133	59.5	27.5	112 PCD ( 8 x Ø 11 )
DN 100	100	104	159	59.5	27.5	137 PCD ( 8 x Ø 11 )
DN 125	125	129	183	61.5	29.5	161 PCD ( 8 x Ø 11 )
DN 150	150	154	213	61.5	29.5	188 PCD ( 8 x Ø 14 )

**Dimension "L" includes the sealing face raised spigot**

**Data Sheet**

**A06F - DIN11864-2 "Form A" Female Liner Flange, 316L SS.  
DIN 11866 / DIN 11850**

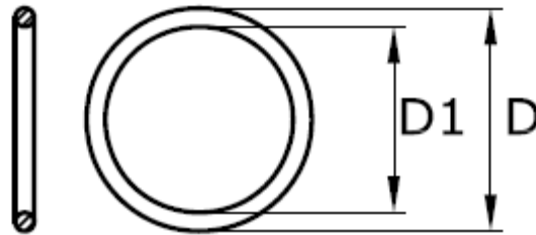


Size:	A	B	C	L1 (Orbital Weld)	L2 (Manual Weld)	D x E Hole Detail
DN 10	10	13	54	40	24	37 PCD ( 4 x Ø 9 )
DN 15	16	19	59	40	24	42 PCD ( 4 x Ø 9 )
DN 20	20	23	64	40	24	47 PCD ( 4 x Ø 9 )
DN 25	26	29	70	40	24	53 PCD ( 4 x Ø 9 )
DN 32	32	35	76	45	24	59 PCD ( 4 x Ø 9 )
DN 40	38	41	82	45	24	65 PCD ( 4 x Ø 9 )
DN 50	50	53	94	45	24	77 PCD ( 4 x Ø 9 )
DN 65	66	70	113	54	24	95 PCD ( 8 x Ø 9 )
DN 80	81	85	133	58	26	112 PCD ( 8 x Ø 11 )
DN 100	100	104	159	58	26	137 PCD ( 8 x Ø 11 )
DN 125	125	129	183	60	28	161 PCD ( 8 x Ø 11 )
DN 150	150	154	213	60	28	188 PCD ( 8 x Ø 14 )

**Dimension "L" includes the sealing face raised spigot**

**Data Sheet**

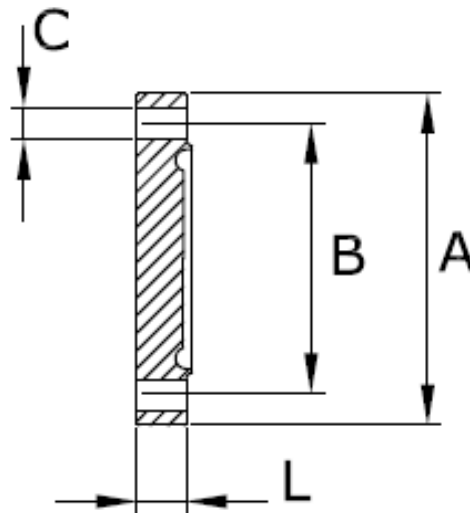
**DIN11864-2 "Form A" O Ring Union Seal,  
DIN 11866 / DIN 11850**



Size:	D1	D	Section	Part No: EPDM	Part No: Viton	Detail
DN 10	12	19	3.5	A030-E010	A030-V010	
DN 15	18	25	3.5	A030-E015	A030-V015	
DN 20	22	29	3.5	A030-E020	A030-V020	
DN 25	28	35	3.5	A030-E025	A030-V025	
DN 32	34	44	5	A030-E032	A030-V032	
DN 40	40	50	5	A030-E040	A030-V040	
DN 50	52	62	5	A030-E050	A030-V050	
DN 65	68	78	5	A030-E065	A030-V065	
DN 80	83	93	5	A030-E080	A030-V080	
DN 100	102	112	5	A030-E100	A030-V100	
DN 125	127	137	5	A030-E125	A030-V125	
DN 150	152	162	5	A030-E150	A030-V150	

**Data Sheet**

**A06G - DIN11864-2 "Form A" Male Nut Flange Blank,  
316L SS, DIN 11866 / DIN 11850**

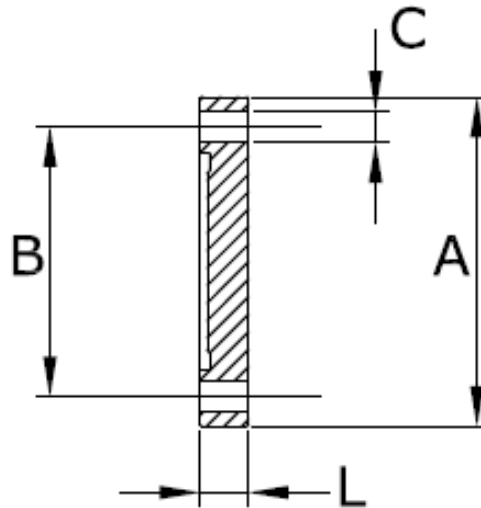


Size:	A	B	C	L	Part No:	Detail
DN 10	54	37	4 x Ø9	11.5	A06G-A010	
DN 15	59	42	4 x Ø9	11.5	A06G-A015	
DN 20	64	47	4 x Ø9	11.5	A06G-A020	
DN 25	70	53	4 x Ø9	11.5	A06G-A025	
DN 32	76	59	4 x Ø9	11.5	A06G-A032	
DN 40	82	65	4 x Ø9	11.5	A06G-A040	
DN 50	94	77	4 x Ø9	11.5	A06G-A050	
DN 65	113	95	8 x Ø9	11.5	A06G-A065	
DN 80	133	112	8 x Ø11	13.5	A06G-A080	
DN 100	159	137	8 x Ø11	15.5	A06G-A100	
DN 125	183	161	8 x Ø11	15.5	A06G-A125	
DN 150	213	188	8 x Ø14	17.5	A06G-A150	

**Dimension "L" includes the sealing face raised spigot**

**Data Sheet**

**A06H - DIN11864-2 "Form A" Female Liner Flange Blank,  
316L SS, DIN 11866 / DIN 11850**



Size:	A	B	C	L	Part No:	Detail
DN 10	54	37	4 x Ø9	10	A06H-A010	
DN 15	59	42	4 x Ø9	10	A06H-A015	
DN 20	64	47	4 x Ø9	10	A06H-A020	
DN 25	70	53	4 x Ø9	10	A06H-A025	
DN 32	76	59	4 x Ø9	10	A06H-A032	
DN 40	82	65	4 x Ø9	10	A06H-A040	
DN 50	94	77	4 x Ø9	10	A06H-A050	
DN 65	113	95	8 x Ø9	10	A06H-A065	
DN 80	133	112	8 x Ø11	12	A06H-A080	
DN 100	159	137	8 x Ø11	14	A06H-A100	
DN 125	183	161	8 x Ø11	14	A06H-A125	
DN 150	213	188	8 x Ø14	16	A06H-A150	