

Data Sheet

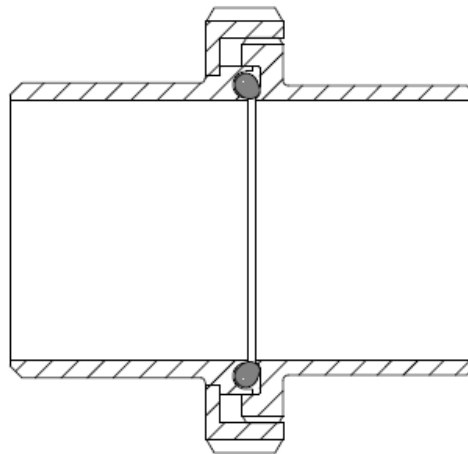
DIN 11864-1 Aseptic Screwed Union for DIN 11866 / 11850

DIN 11864 -1 Aseptic Screwed Union

This range of aseptic fittings has been developed by the German hygienic industry to meet the exacting needs of the food, chemical and pharmaceutical industries.

Three designs of pipe fittings have been tailored to accept 2 different styles of aseptic seals that effect a smooth interface within the pipe work whilst simultaneously achieving a metal to metal seat behind the joint.

The seal sections used are referenced as "Form A" and "Form B" and both have distinctive profiles that are easily recognised. Form A is an O Ring Joint whilst Form B is a 2-part Square seal with a secondary internal diamond section.



This design of fitting is based on the DIN 11851 Hygienic Screwed Union. This firmly established industry standard the union was used as the basis for the design upgrade where an Aseptic Joint replaced the convention D Section Seal. The new design was initially referred to as the DIN 11853 Aseptic Screwed Union before finally being included as the first of the 3 new sections of the DIN 11864 standard.

Available with optional lengths to suit Orbital and Manual Welding, these unions have been designed to match tube and pipe specifications in DIN 11850; ISO 2037, ASME BPE 2002 and BS 4825 Part 1 and also ISO 1127 for schedule pipe.

Size range: 10mm to 100mm

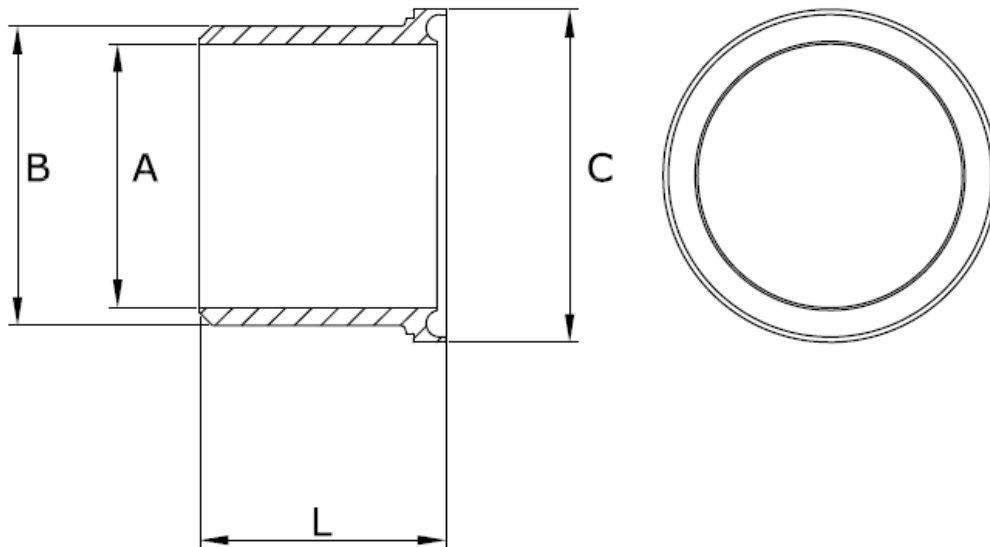
Materials: 316L SS

Related standards:

DIN 11864-1 Form A - Aseptic Screwed Union
DIN 11864-2 Form A - Aseptic Flange Union
DIN 11864-3 Form A - Aseptic Tri-Clamp Union
DIN 11866 / 11850
ISO1127
ISO 2037 / BS 4825 /ASME BPE 2002
DIN 11853 (Type 1 only)

Data Sheet

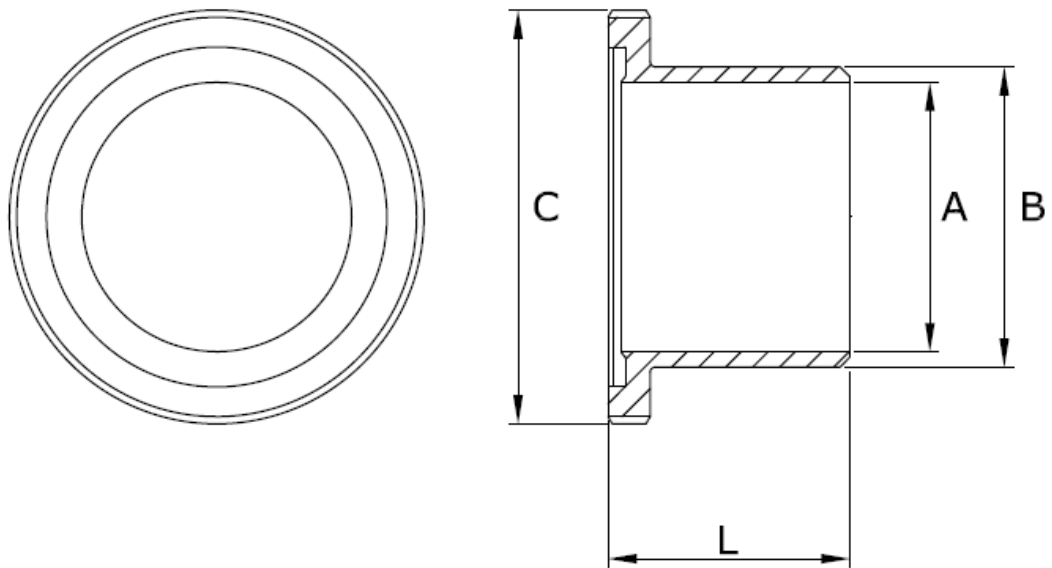
**DIN11864-1 "Form A" Weld Liner, 316L SS,
DIN 11866 / DIN 11850**



Size:	A	B	C	L1 (Orbital Weld)	L2 (Manual Weld)	Detail
DN 10	10	13	21.9	39	17	A063-A010
DN 15	16	19	27.9	39	17	A063-A015
DN 20	20	23	35.9	38	18	A063-A020
DN 25	26	29	42.9	40	22	A063-A025
DN 32	32	35	48.9	47	25	A063-A032
DN 40	38	41	54.9	47	26	A063-A040
DN 50	50	53	66.9	48	30	A063-A050
DN 65	66	70	84.9	61	34	A063-A065
DN 80	81	85	98.9	61	38	A063-A080
DN 100	100	104	118.9	66	46	A063-A100

Data Sheet

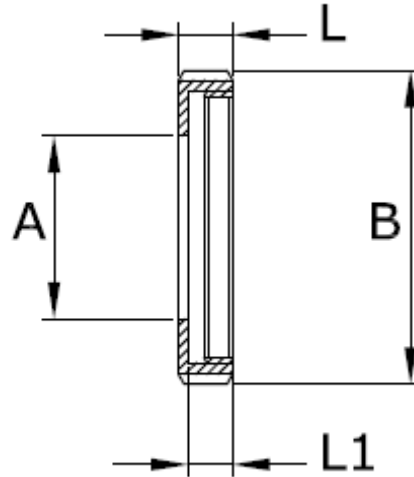
**DIN11864-1 "Form A" Weld Male, 316L SS.
DIN 11866 / DIN 11850**



Size:	A	B	C	L1 (Orbital Weld)	L2 (Manual Weld)	Detail
DN 10	10	13	28 x 1/8"	41	19	A061-A010
DN 15	16	19	34 x 1/8"	41	19	A061-A015
DN 20	20	23	44 x 1/6"	43	21	A061-A020
DN 25	26	29	52 x 1/6"	43	26	A061-A025
DN 32	32	35	58 x 1/6"	48	30	A061-A032
DN 40	38	41	65 x 1/6"	48	31	A061-A040
DN 50	50	53	78 x 1/6"	48	31	A061-A050
DN 65	66	70	95 x 1/6"	60	36	A061-A065
DN 80	81	85	110 x 1/4"	64	42	A061-A080
DN 100	100	104	130 x 1/4"	64	50	A061-A100

Data Sheet

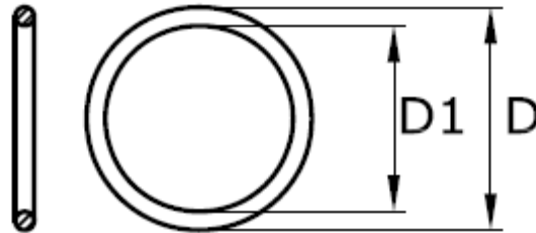
**DIN11864-1 "Form A " Slotted Nut, 316L SS,
DIN 11866 / DIN 11850**



Size:	A	B	Thread Detail	L	L1	Detail
DN 10	19	38	28 x 1/8"	18	15	A064-A010
DN 15	25	44	34 x 1/8"	18	15	A064-A015
DN 20	31	54	44 x 1/6"	20	17	A064-A020
DN 25	36	63	52 x 1/6"	21	18	A064-A025
DN 32	42	70	58 x 1/6"	21	18	A064-A032
DN 40	49	78	65 x 1/6"	21	18	A064-A040
DN 50	62	92	78 x 1/6"	22	19	A064-A050
DN 65	80	112	95 x 1/6"	25	21	A064-A065
DN 80	94	127	110 x 1/4"	29	25	A064-A080
DN 100	115	148	130 x 1/4"	31	26	A064-A100

Data Sheet

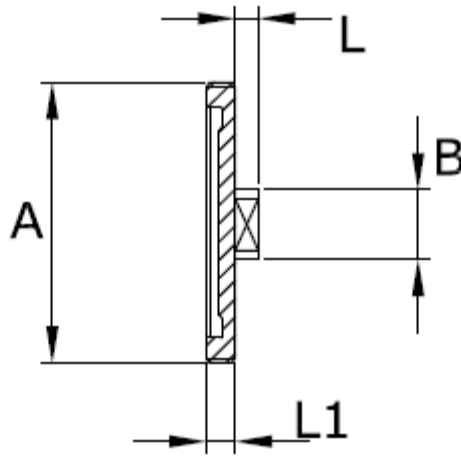
**DIN11864-1 "Form A " O Ring Union Seal,
DIN 11866 / DIN 11850**



Size:	D1	D	Section	Part No: EPDM	Part No: Viton	Detail
DN 10	12	19	3.5	A030-E010	A030-V010	
DN 15	18	25	3.5	A030-E015	A030-V015	
DN 20	22	29	3.5	A030-E020	A030-V020	
DN 25	28	35	3.5	A030-E025	A030-V025	
DN 32	34	44	5	A030-E032	A030-V032	
DN 40	40	50	5	A030-E040	A030-V040	
DN 50	52	62	5	A030-E050	A030-V050	
DN 65	68	78	5	A030-E065	A030-V065	
DN 80	83	93	5	A030-E080	A030-V080	
DN 100	102	112	5	A030-E100	A030-V100	
DN 125	127	137	5	A030-E125	A030-V125	
DN 150	152	162	5	A030-E150	A030-V150	

Data Sheet

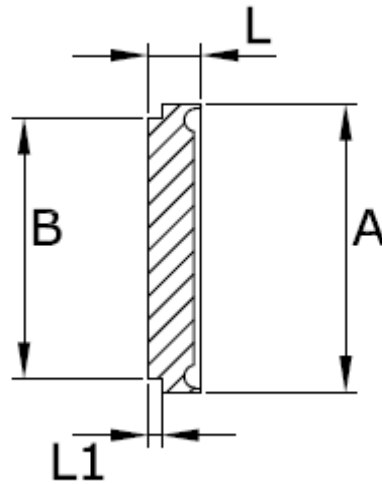
**DIN11864-1 "Form A" Male Blank, 316L SS
DIN 11866 / DIN 11850**



Size:	A	B	L1	L	Part No:	Detail
DN 10	28 x 1/8"	22	12	10	A06D-A010	
DN 15	34 x 1/8"	25	12	10	A06D-A015	
DN 20	44 x 1/6"	25	14	10	A06D-A020	
DN 25	52 x 1/6"	34	14	10	A06D-A025	
DN 32	58 x 1/6"	34	14	10	A06D-A032	
DN 40	65 x 1/6"	34	14	10	A06D-A040	
DN 50	78 x 1/6"	34	14	10	A06D-A050	
DN 65	95 x 1/6"	34	16	10	A06D-A065	
DN 80	110 x 1/4"	34	20	10	A06D-A080	
DN 100	130 x 1/4"	34	20	10	A06D-A100	

Data Sheet

**DIN11864-1 "Form A " Weld Liner, 316L SS,
DIN 11866 / DIN 11850**



Size:	A	B	L	L1	Part No:	Detail
DN 10	21.9	18	9	3	A06C-A010	
DN 15	27.9	24	9	3	A06C-A015	
DN 20	35.9	30	10	3	A06C-A020	
DN 25	42.9	35	12	3	A06C-A025	
DN 32	48.9	41	13	3	A06C-A032	
DN 40	54.9	48	13	3	A06C-A040	
DN 50	66.9	61	14	3	A06C-A050	
DN 65	84.9	79	16	4	A06C-A065	
DN 80	98.9	93	16	4	A06C-A080	
DN 100	118.9	114	20	5	A06C-A100	