

Data Sheet

Thick Walled Tank Ferrules:

The Clamp system is now common place in the Hygienic and Sanitary Industries. Our range of tank ferrules and schedule clamp ferrules was developed to meet the growing need for material compatibility and pipe and vessel wall thickness alignment. Our tank ferrules are offered in 316L stainless steel as standard and additionally can be offered in ASTM A 182, A276 and even ASTM A479 & A249, to match boiler specifications.

Related Standards:

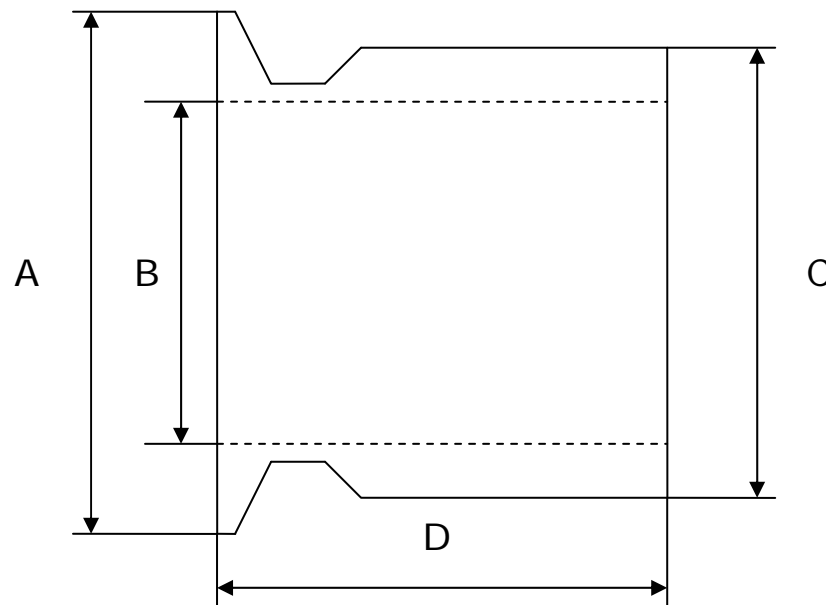
ASME BPE-2002
BS 4825 Part 3 / ISO 2037
DIN 32676
DIN11864-3
3A Standard
ISO 2852 and SMS 3017
SMS 3008
ISO 1127 schedule pipe size
BS 6362 schedule pipe size
ASTM A312 schedule pipe



- Thick walled ferrules, matched with tank walls for pressure and vacuum rating
- 316L ASTM A240-78 stainless steel material and to EN 10088-3:1995
- Extended lengths produced to suit jacketed vessels
- 0.5 µm Ra internal surface finish offered as standard
- Full range of FDA compatible seal materials available
- ASTM A213 Schedule 5, 10 and 40 sizes offered
- Exotic materials available such as Titanium, Hastelloy® C22 & C276, Monel® 400, Nylon, Polypropylene and ABS
- Electro polishing is available for high surface finish
- Material certification to EN 10204 3.1.B
- Additional Standards BS 4825, DIN 32676, SMS 3017, ISO 2852 and ISO 1127

Data Sheet

3010 - Tank Ferrule, Heavy Section



Size	A	B	C	D	Wall (mm)	Part No
1/2"	25.0	9.5	16.7	51.0	3.60	3010-A013
3/4"	25.0	15.8	23.05	51.0	3.60	3010-A019
1"	50.4	22.2	34.9	63.5	6.35	3010-A026
1.1/2"	50.4	34.9	47.6	63.5	6.35	3010-A038
2"	63.9	47.6	60.3	76.2	6.35	3010-A051
2.1/2"	77.4	60.3	73.3	76.2	6.50	3010-A064
3"	90.9	73.0	85.7	101.6	6.35	3010-A076
4"	118.9	97.5	110.4	101.6	6.45	3010-A102
6"	166.9	146.8	159.8	101.6	6.50	3010-A154
8"	217.7	197.7	210.7	76.2	6.50	3010-A200
10"	268.5	247.2	260.2	76.2	6.50	3010-A254
12"	319.5	298.0	311.0	76.2	6.50	3010-A300
	Notes: Surface Finish 0.5 µm Ra internal and Satin finish external					