

Data Sheet

Clamp Hosetails and Adapters

A comprehensive range of Clamp hosetails and adapters is offered, allowing for quick and easy attachment to soft rubber and PVC tube.

This useful range of connections is ideal for taking quick samples on low pressure applications and for temporary connections.

We also offer higher pressure options in nominal bore sizes for swaged hoses.

Many Clamp to BSP options in Male and Female threads are held in stock.

NPT and UNC adapters can also be made to order.

Low sulphur specials have also been manufactured
For stringent applications



Clamp Hosetails:

- 316L stainless steel material
- Range of sizes and options available
- 4mm to 2" sizes held in stock
- Fabrication service available for specials
- 0.5 μM Ra internal surface finish offered as standard
- Many reducing and compensatory sizes are also available
- Electro polishing available for high surface finish
- Exotic materials available such as titanium, Hastelloy®, Monel®, Nylon and ABS
- Material certification to EN 10204 3.1.B

Options:

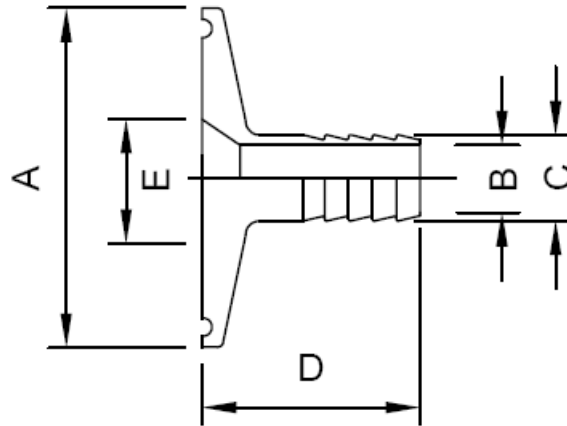
- Heavy section hosetails with Clamp connections
- Specials with UNC, NPT, URT, SAE and JIC hydraulic connections

Clamp Adapters:

- 316L stainless steel material
- Range of sizes and options available from 1/8" BSP
- Many BSP Male and Female sizes held in stock
- Reducing options also available such as 1" to 3/4" BSP
- Specials available to order including Clamp to NPT, NPS, RJT

Data Sheet

3011 Clamp Hosetails – Imperial

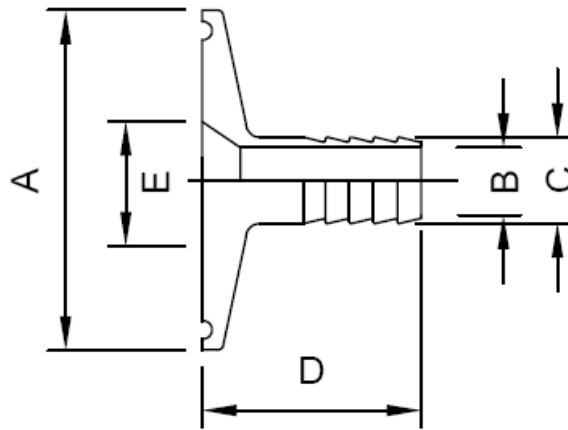


Size	A	B	C	D	E	Part No
1/2" x 1/4"	25.3	3.35	6.40	32	10.0	3011-A013-0064
1/2" x 3/8"	25.3	6.50	9.50	32	10.0	3011-A013-0095
1/2"	25.3	9.70	12.70	32	10.0	3011-A013
3/4" x 1/4"	25.3	3.35	6.40	32	16.0	3011-A019-0064
3/4" x 3/8"	25.3	6.50	9.50	32	16.0	3011-A019-0095
3/4" x 1/2"	25.3	9.70	12.70	32	16.0	3011-A019-013
3/4"	25.3	16.00	19.00	32	16.0	3011-A019
1" x 1/2"	50.5	9.70	12.70	40	23.0	3011-A026-013
1" x 3/4"	50.5	16.00	19.00	40	23.0	3011-A026-019
1"	50.5	23.00	26.00	40	23.0	3011-A026
1 1/2" x 1/2"	50.5	9.70	12.70	40	35.0	3011-A038-013
1 1/2" x 3/4"	50.5	16.00	19.00	40	35.0	3011-A038-019
1 1/2" x 1"	50.5	23.00	26.00	40	35.0	3011-A038-026
1 1/2"	50.5	35.00	38.10	40	35.0	3011-A038
2" x 1"	64.0	23.00	26.00	60	48.0	3011-A051-026
2" x 1 1/2"	64.0	35.00	38.10	60	48.0	3011-A051-038
2"	64.0	47.00	50.80	60	48.0	3011-A051

Some items are held in stock, but most of these fittings are machined to order

Data Sheet

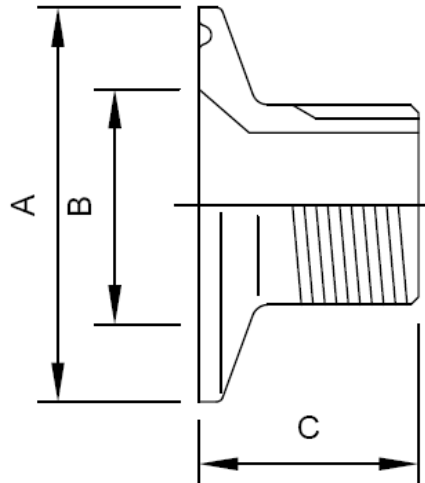
3012 Clamp Hosetails – Metric



Size	A	B	C	D	E	Part No
1/2" x 6	25.3	3.5	6.0	30	10.0	3012-A13-006
1/2" x 8	25.3	5.0	8.0	30	10.0	3012-A13-008
1/2" x 10	25.3	7.0	10.0	30	10.0	3012-A013-010
3/4" x 12	25.3	9.0	12.0	30	16.0	3012-A019-012
3/4" x 14	25.3	11.0	14.0	30	16.0	3012-A019-014
3/4" x 16	25.3	13.0	16.0	30	16.0	3012-A019-016
3/4" x 18	25.3	15.0	18.0	30	16.0	3012-A019-018
1" x 10	50.5	7.0	10.0	40	23.0	3012-A026-010
1" x 12	50.5	9.0	12.0	40	23.0	3012-A026-012
1" x 14	50.5	11.0	14.0	40	23.0	3012-A026-014
1" x 16	50.5	13.0	16.0	40	23.0	3012-A026-016
1" x 18	50.5	15.0	18.0	40	23.0	3012-A026-018
1" x 20	50.5	17.0	20.0	40	23.0	3012-A026-020
1" x 22	50.5	19.0	22.0	40	23.0	3012-A026-022
1 1/2" x 24	50.5	21.0	24.0	40	36.0	3012-A38-024
1 1/2" x 26	50.5	23.0	26.0	40	36.0	3012-A038-026
1 1/2" x 28	50.5	25.0	28.0	40	36.0	3012-A038-028
Some items are held in stock, but most of these fittings are machined to order						

Data Sheet

3014 - Clamp Adaptors – BSP Taper Male

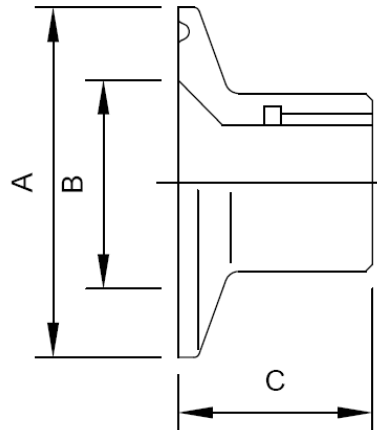


Size	A	B	C	D	BSPM	Part No
1/2" x 1/4"	25.3	10.0	30		1/4"	3014-A013-0064
1/2" x 3/8"	25.3	10.0	30		3/8"	3014-A013-0095
3/4" x 1/2"	25.3	16.0	30		1/2"	3014-A019-013
1" x 3/8"	50.5	23.0	32		3/8"	3014-A026-0095
1" x 1/2"	50.5	23.0	32		1/2"	3014-A026-013
1" x 3/4"	50.5	23.0	36		3/4"	3014-A026-019
1"	50.5	23.0	35		1"	3014-A026
1 1/2" x 1/2"	50.5	35.0	36		1/2"	3014-A038-013
1 1/2" x 3/4"	50.5	35.0	36		3/4"	3014-A038-019
1 1/2" x 1"	50.5	35.0	36		1"	3014-A038-026
1" x 1 1/4"	50.5	35.0	36		1 1/4"	3014-A038-032
1 1/2"	50.5	35.0	40		1 1/2"	3014-A038
2"	64.0	47.6	40		2"	3014-A051
DN10 x 1/4"	34.3	10.0	30		1/4"	3014-A010-0064
DN10 x 3/8"	34.0	10.0	30		3/8"	3014-A010-0095
DN10 x 1/2"	34.0	10.0	30		1/2"	3014-A010-013
DN10 x 3/4"	34.0	10.0	30		3/4"	3014-A010-019
DN15 x 1/4"	34.3	16.0	30		1/4"	3014-A015-0064
DN15 x 3/8"	34.0	16.0	30		3/8"	3014-A015-0095
DN15 x 1/2"	34.0	16.0	30		1/2"	3014-A015-013
DN15 x 3/4"	34.0	16.0	30		3/4"	3014-A015-019
DN20 x 1/4"	34.3	20.0	30		1/4"	3014-A020-0064
DN20 x 3/8"	34.0	20.0	30		3/8"	3014-A020-0095
DN20 x 1/2"	34.0	20.0	30		1/2"	3014-A020-013
DN20 x 3/4"	34.0	20.0	30		3/4"	3014-A020-019

NPT Male threads are also available

Data Sheet

3015 - Clamp Adaptors – BSP Female

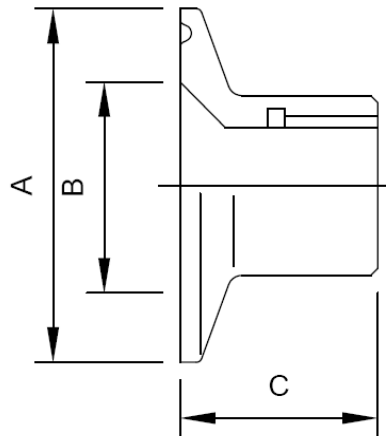


Size	A	B	C	D	BSPP (FEM)	Part No
1/2" x 1/8"	25.3	10.0	25.0		1/8"	3015-A013-0032
1/2" x 1/4"	25.3	10.0	25.0		1/4"	3015-A013-0064
1/2" x 3/8"	25.3	10.0	25.0		3/8"	3015-A013-0095
1/2"	25.3	10.0	30.0		1/2"	3015-A013
1/2" x 3/4"	25.3	10.0	30.0		3/4"	3015-A013-019
1" x 1/8"	50.5	22.0	25.0		1/8"	3015-A026-0032
1" x 1/4"	50.5	22.0	25.0		1/4"	3015-A026-0064
1" x 3/8"	50.5	22.0	25.0		3/8"	3015-A026-0095
1" x 1/2"	50.5	22.0	25.0		1/2"	3015-A026-013
1" x 3/4"	50.5	22.0	25.0		3/4"	3015-A026-019
1"	50.5	22.0	25.0		1"	3015-A026
1 1/2" x 1/8"	50.5	35.0	25.0		1/8"	3015-A038-0032
1 1/2" x 1/4"	50.5	35.0	25.0		1/4"	3015-A038-0064
1 1/2" x 3/8"	50.5	35.0	25.0		3/8"	3015-A038-0095
1 1/2" x 1/2"	50.5	35.0	25.0		1/2"	3015-A038-013
1 1/2" x 3/4"	50.5	35.0	25.0		3/4"	3015-A038-019
1 1/2" x 1"	50.5	35.0	25.0		1"	3015-A038-026
2" x 1/2"	64.0	48.0	25.0		1/2"	3015-A051-013
2" x 3/4"	64.0	48.0	25.0		3/4"	3015-A051-019
2" x 1"	64.0	48.0	25.0		1"	3015-A051-026
2" x 1 1/2"	64.0	48.0	25.0		1 1/2"	3015-A051-038
2"	64.0	48.0	25.0		2"	3015-A051

Most of the above sizes are held in stock for immediate delivery

Data Sheet

3015 - Clamp (Metric) Adaptors – BSP Female



Size	A	B	C	D	BSPP (FEM)	Part No
DN10 x 1/4"	34.0	10.0	25.0		1/4"	3015-A010-0064
DN10 x 3/8"	34.0	10.0	25.0		3/8"	3015-A010-0095
DN10 x 1/2"	34.0	10.0	30.0		1/2"	3015-A010-013
DN10 x 3/4"	34.0	10.0	30.0		3/4"	3015-A010-019
DN15 x 1/4"	34.0	16.0	25.0		1/4"	3015-A015-0064
DN15 x 3/8"	34.0	16.0	25.0		3/8"	3015-A015-0095
DN15 x 1/2"	34.0	16.0	30.0		1/2"	3015-A015-013
DN15 x 3/4"	34.0	16.0	30.0		3/4"	3015-A015-019
DN20 x 1/4"	34.0	20.0	25.0		1/4"	3015-A020-0064
DN20 x 3/8"	34.0	20.0	25.0		3/8"	3015-A020-0095
DN20 x 1/2"	34.0	20.0	30.0		1/2"	3015-A020-013
DN20 x 3/4"	34.0	20.0	30.0		3/4"	3015-A020-019
Most of the above sizes are held in stock for immediate delivery						