

**Data Sheet**

## BS 10: 1962 Flat Faced Flanges.

Alchem offer a range of low pressure BS 10 flat faced flanges including Tables D and E which are still commonly used as the economical answer for simple piping joints.

Other flanges from the range can be made to order including Tables "F to T" that are designed for pipes and vessels containing steam at a maximum temperature of 425°C / 800°F (Based on mild steel flange properties).

Although the standard has now been withdrawn the flanges are still used extensively throughout the piping industry and are often found in steel mills around the globe.

The range is manufactured with a flat face and does not feature the raised sealing face of heavy duty flanges such as ANSI B 16.5, BS4504 and DIN 2576 (PN 10 and 16) for example. Although the standard shows the flange with a raised boss on the rear, the flanges are usually supplied as flat plate flanges unless otherwise stated.

Originally designed for use in carbon steel, these flanges are manufactured from plate and bar and are available in mild steel, stainless steel and copper alloys.

These flanges are often used in hygienic applications such as food and brewing where corrosion and cost are the main criteria.

### Options

- Plate Flanges
- Blank Flanges
- Slip-On Bossed Flanges
- Blind Flanges
- Threaded Flanges

**Sizes:** ½" to 24" NB

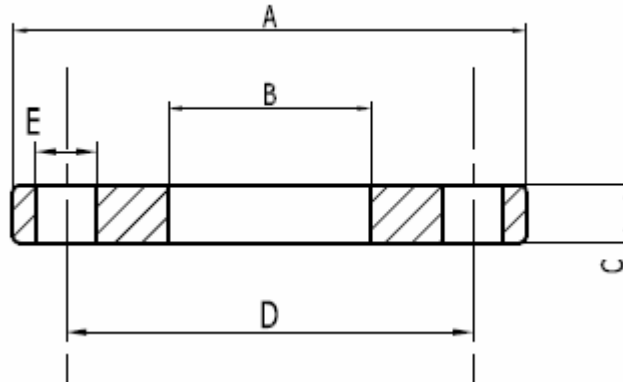
### Materials:

Stainless Steel 304 and 316  
Carbon Steel  
Copper Alloys  
Zinc Plated or Galvanized Steel



**Data Sheet**

**F13D - BS 10:1962 Table D Plate Flange**

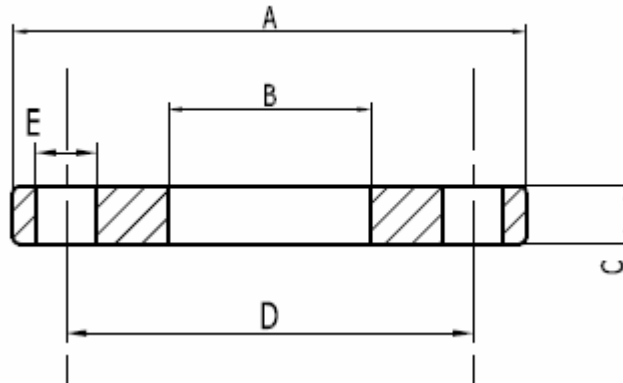


Size	A	B	C	D	E	No of Bolts
1/2"	95	22.0	4.8	66.7	12.7	4
3/4"	102	27.7	4.8	73.0	12.7	4
1"	114	34.5	4.8	82.6	12.7	4
1 1/4"	121	43.2	6.4	87.3	12.7	4
1 1/2"	133	49.5	6.4	98.4	12.7	4
2"	152	62.0	7.9	114.3	15.9	4
2 1/2"	165	74.7	7.9	127.0	15.9	4
3"	184	90.7	9.5	146.0	15.9	4
3 1/2"	203	103.4	9.5	165.1	15.9	4
4"	216	116.1	9.5	177.8	15.9	4
5"	254	143.8	12.7	209.6	15.9	8
6"	279	170.7	12.7	235.0	15.9	8
7"	305		12.7	260.3	15.9	8
8"	337	221.5	12.7	292.1	15.9	8
9"	368		15.9	323.9	15.9	8
10"	406	276.4	15.9	355.6	19.1	8
12"	457	327.2	19.0	406.4	19.1	12
13"	489		19.0	438.2	19.1	12
14"	527	359.2	22.0	469.9	22.2	12
15"	552		22.0	495.3	22.2	12
16"	578	410.5	22.0	520.7	22.2	12
17"	610		25.0	552.5	22.2	12
18"	641	461.8	25.0	584.2	22.2	12
19"	673		25.0	609.6	22.2	12
20"	705	513.1	28.5	641.4	22.2	16
21"	737		28.5	673.1	22.2	16
22"	762		28.5	698.5	25.4	16
23"	787		28.5	723.9	25.4	16
24"	826	615.9	31.8	755.7	25.4	16

For Steam Working Pressures up to 50 PSI  
Maximum Hydraulic Test Pressure (150 PSI)  
All flanges can be supplied with alternative bore sizes and thicker section

**Data Sheet**

**F13E - BS 10:1962 Table E Plate Flange**

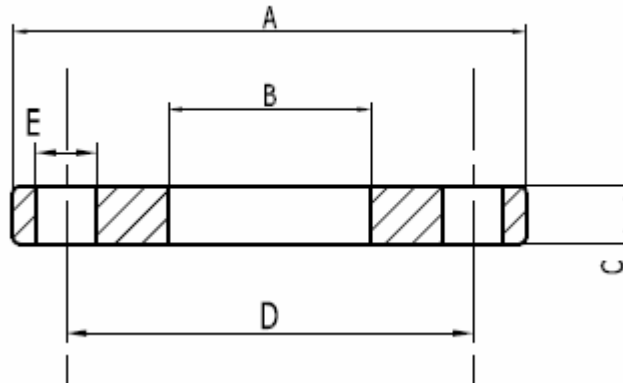


Size	A	B	C	D	E	No of Bolts
1/2"	95	22.3	6.4	66.7	12.7	4
3/4"	102	27.7	6.4	73.0	12.7	4
1"	114	34.5	7.1	82.6	12.7	4
1 1/4"	121	43.2	7.9	87.3	12.7	4
1 1/2"	133	49.5	8.7	98.4	12.7	4
2"	152	62.0	9.5	114.3	15.9	4
2 1/2"	165	74.7	10.3	127.0	15.9	4
3"	184	90.7	11.1	146.0	15.9	4
3 1/2"	203	103.4	11.9	165.1	15.9	8
4"	216	116.1	12.7	177.8	15.9	8
5"	254	143.8	14.3	209.6	15.9	8
6"	279	170.7	17.5	235.0	19.1	8
7"	305		19.0	260.3	19.1	8
8"	337	221.5	19.0	292.1	19.1	8
9"	368		20.6	323.9	19.1	12
10"	406	276.4	22.0	355.6	19.1	12
12"	457	327.2	25.0	406.4	22.2	12
13"	489		25.0	438.2	22.2	12
14"	527	359.2	28.5	469.9	22.2	12
15"	552		31.7	495.3	22.2	12
16"	578	410.5	31.7	520.7	22.2	12
17"	610		34.9	552.5	22.2	12
18"	641	461.8	34.9	584.2	22.2	16
19"	673		38.0	609.6	22.2	16
20"	705	513.1	38.0	641.4	22.2	16
21"	737		41.2	673.1	25.4	16
22"	762		44.4	698.5	25.4	16
23"	787		44.4	723.9	25.4	16
24"	826	615.9	47.6	755.65	28.6	16

For Steam Working Pressures up to 100 PSI  
Maximum Hydraulic Test Pressure (300 PSI)  
All flanges can be supplied with alternative bore sizes and thicker section

**Data Sheet**

**F13F - BS 10:1962 Table F Plate Flange**

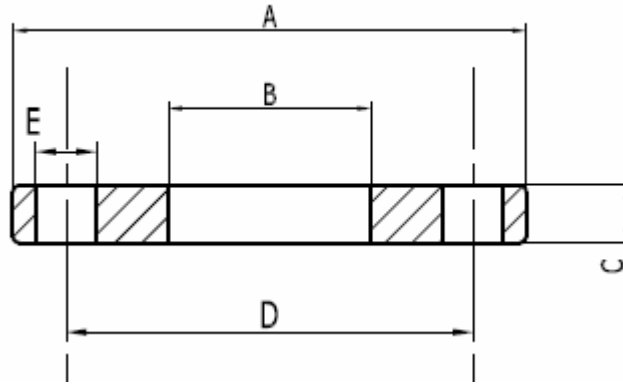


Size	A	B	C	D	E	No of Bolts
1/2"	95	22.3	9.5	66.7	12.7	4
3/4"	102	27.7	9.5	73.0	12.7	4
1"	121	34.5	9.5	87.3	15.9	4
1 1/4"	133	43.2	12.7	98.4	15.9	4
1 1/2"	140	49.5	12.7	104.8	15.9	4
2"	165	62.0	15.9	127.0	15.9	4
2 1/2"	184	74.7	15.9	146.1	15.9	8
3"	203	90.7	15.9	165.1	15.9	8
3 1/2"		103.4				
4"	229	116.1	19.0	190.5	15.9	8
5"	279	143.8	22.2	235.0	19.0	8
6"	305	170.7	22.2	260.4	19.0	12
7"						
8"	368	221.5	25.4	323.9	19.0	12
9"						
10"	432	276.4	28.6	381.0	22.2	12
12"	489	327.2	31.8	438.2	22.2	16

For Steam Working Pressures up to 150 PSI  
Maximum Hydraulic Test Pressure (450 PSI)  
All flanges can be supplied with alternative bore sizes and thicker section

**Data Sheet**

**F13H - BS 10:1962 Table H Plate Flange**

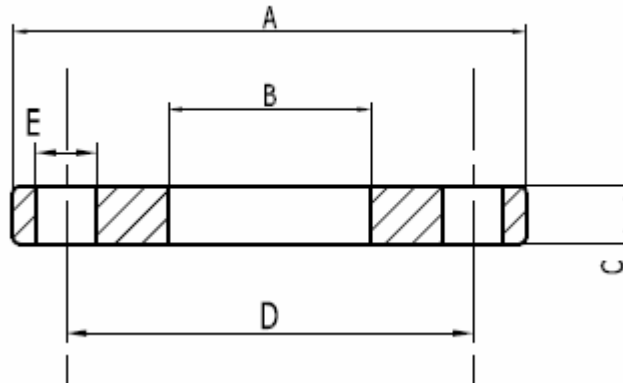


Size	A	B	C	D	E	No of Bolts
½"	114	22.3	12.7	82.6	15.9	4
¾"	114	27.7	12.7	82.6	15.9	4
1"	121	34.5	14.3	87.3	15.9	4
1 ¼"	133	43.2	17.5	98.4	15.9	4
1 ½"	140	49.5	17.5	104.8	15.9	4
2"	165	62.0	19.0	127.0	15.9	4
2 ½"	184	74.7	19.0	146.1	15.9	8
3"	203	90.7	22.2	165.1	15.9	8
3 ½"		103.4				
4"	229	116.1	25.4	190.5	15.9	8
5"	279	143.8	28.6	235.0	19.0	8
6"	305	170.7	28.6	260.4	19.0	12
7"						
8"	368	221.5	31.8	323.9	19.0	12
9"						
10"	432	276.4	34.9	381.0	22.2	12
12"	489	327.2	41.3	438.2	22.2	16

For Steam Working Pressures up to 250 PSI  
Maximum Hydraulic Test Pressure (750 PSI)  
All flanges can be supplied with alternative bore sizes and thicker section

**Data Sheet**

**F13J - BS 10:1962 Table J Plate Flange**

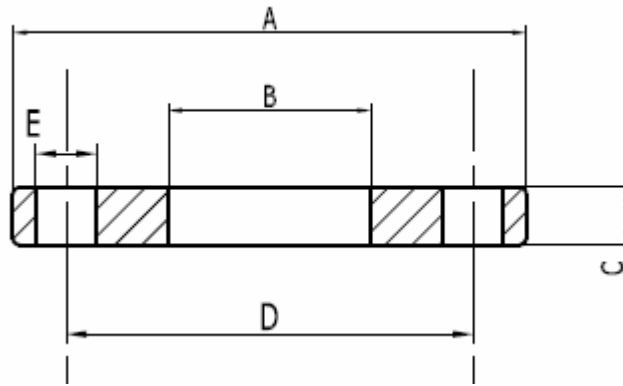


Size	A	B	C	D	E	No of Bolts
1/2"	114	22.3	15.9	82.6	15.9	4
3/4"	114	27.7	15.9	82.6	15.9	4
1"	121	34.5	19.0	87.3	15.9	4
1 1/4"	133	43.2	19.0	98.4	15.9	4
1 1/2"	140	49.5	22.2	104.8	15.9	4
2"	165	62.0	25.4	127.0	19.0	4
2 1/2"	184	74.7	25.4	146.0	19.0	8
3"	203	90.7	31.8	165.0	19.0	8
3 1/2"		103.4				
4"	229	116.1	34.9	190.5	19.0	8
5"	279	143.8	38.1	234.9	22.2	8
6"	305	170.7	38.1	260.4	22.2	12
7"						
8"	368	221.5	41.3	323.8	22.2	12
9"						
10"	432	276.4	47.6	381.0	25.4	12
12"	489	327.2	50.8	438.1	25.4	16

For Steam Working Pressure up to 350 PSI  
Maximum Hydraulic Test Pressure (1050 PSI)  
All flanges can be supplied with alternative bore sizes and thicker section

**Data Sheet**

**F13K - BS 10:1962 Table K Plate Flange**

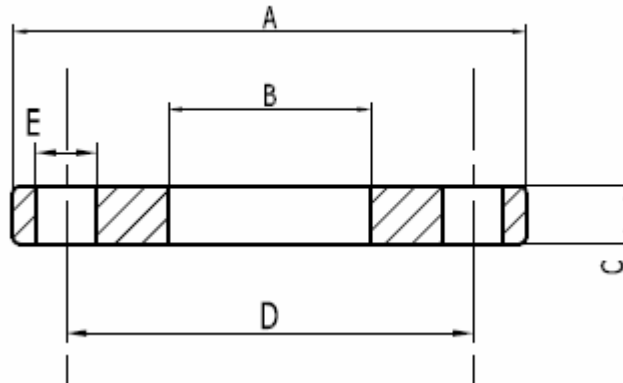


Size	A	B	C	D	E	No of Bolts
1/2"	114	22.3	19.0	82.6	15.9	4
3/4"	114	27.7	19.0	82.6	15.9	4
1"	127	34.5	22.2	95.0	15.9	4
1 1/4"	133	43.2	22.2	98.4	15.9	4
1 1/2"	152	49.5	25.4	114.0	19.0	4
2"	165	62.0	25.4	127.0	15.9	8
2 1/2"	184	74.7	28.6	146.0	19.0	8
3"	203	90.7	31.8	165.0	19.0	8
3 1/2"		103.4				
4"	241	116.1	34.9	196.8	22.2	8
5"	279	143.8	41.3	234.9	22.2	12
6"	305	170.7	41.3	260.4	22.2	12
7"						
8"	368	221.5	47.6	317.5	25.4	12
9"						
10"	432	276.4	50.8	381.0	25.4	16
12"	489	327.2	57.1	432.0	28.5	16

For Steam Working Pressure up to 450 PSI  
Maximum Hydraulic Test Pressure (1350 PSI)  
All flanges can be supplied with alternative bore sizes and thicker section

**Data Sheet**

**F13R - BS 10:1962 Table R Plate Flange**

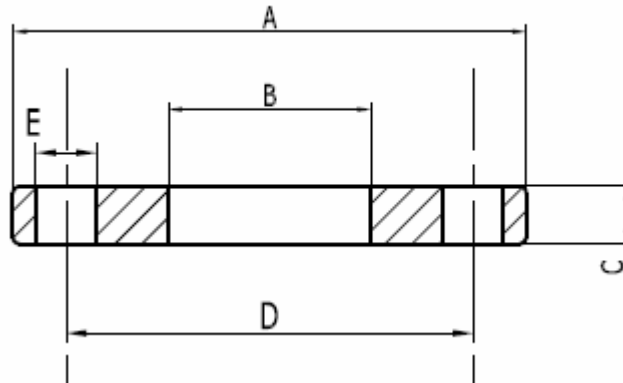


Size	A	B	C	D	E	No of Bolts
1/2"	114	22.3	19.0	82.6	15.9	4
3/4"	114	27.7	19.0	82.6	15.9	4
1"	127	34.5	22.2	95.0	15.9	4
1 1/4"	133	43.2	22.2	98.4	15.9	4
1 1/2"	152	49.5	25.4	114.0	19.0	4
2"	165	62.0	25.4	127.0	15.9	8
2 1/2"	184	74.7	28.6	146.0	19.0	8
3"	203	90.7	31.8	165.0	19.0	8
3 1/2"		103.4				
4"	241	116.1	34.9	196.8	22.2	8
5"	279	143.8	41.3	234.9	22.2	12
6"	305	170.7	44.4	260.4	22.2	12
7"						
8"	368	221.5	50.8	323.8	25.4	12
9"						
10"	432	276.4	57.1	387.3	25.4	16
12"	508	327.2	63.5	457.2	28.5	16

For Steam Working Pressures up to 600 PSI  
Maximum Hydraulic Test Pressure (1800 PSI)  
All flanges can be supplied with alternative bore sizes and thicker section

**Data Sheet**

**F13S - BS 10:1962 Table S Plate Flange**

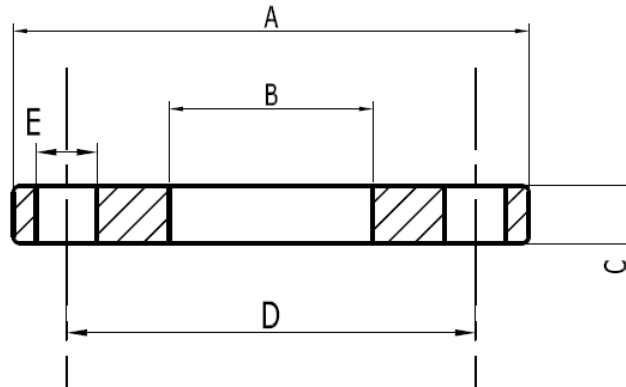


Size	A	B	C	D	E	No of Bolts
1/2"	127	22.3	22.2	88.9	19.0	4
3/4"	127	27.7	22.2	88.9	19.0	4
1"	140	34.5	25.4	102.0	19.0	4
1 1/4"	146	43.2	28.6	107.9	19.0	4
1 1/2"	159	49.5	28.6	120.6	19.0	4
2"	171	62.0	31.8	133.0	19.0	8
2 1/2"	184	74.7	31.8	146.0	19.0	8
3"	203	90.7	34.9	165.0	22.2	8
3 1/2"		103.4				
4"	248	116.1	41.3	203.0	25.4	8
5"	286	143.8	44.4	234.9	22.2	12
6"	324	170.7	50.8	273.0	25.4	12
7"						
8"	413	221.5	63.5	355.6	31.8	12
9"						
10"	482	276.4	79.4	425.4	31.8	16
12"	578	327.2	92.1	508.0	38.1	16

For Steam Working Pressures up to 900 PSI  
Maximum Hydraulic Test Pressure (2700 PSI)  
All flanges can be supplied with alternative bore sizes and thicker section

**Data Sheet**

**F13T - BS 10:1962 Table T Plate Flange**



Size	A	B	C	D	E	No of Bolts
½"	140	22.3	25.4	102.0	19.0	4
¾"	140	27.7	25.4	102.0	19.0	4
1"	146	34.5	28.6	107.9	19.0	4
1 ¼"	159	43.2	31.8	120.6	22.2	4
1 ½"	171	49.5	34.9	133.0	19.0	8
2"	184	62.0	34.9	146.0	19.0	8
2 ½"	203	74.7	41.3	165.0	22.2	8
3"	235	90.7	47.6	190.5	25.4	8
3 ½"		103.4				
4"	286	116.1	57.2	234.9	28.6	8
5"	324	143.8	66.7	273.0	28.6	12
6"	375	170.7	73.0	317.5	31.7	12
7"						
8"	476	221.5	88.9	406.4	38.1	12
9"						
10"	589	276.4	107.9	488.9	38.1	16
12"	654	327.2	120.6	571.5	44.4	16

For Steam Working Pressure up to 1400 PSI  
Maximum Hydraulic Test Pressure (4200 PSI)  
All flanges can be supplied with alternative bore sizes and thicker section