

Data Sheet

ANSI B16.5:1996 American National Standard, RF Flanges and Flanged Fittings.

Manufactured primarily from castings and forgings the flange standard should be cross referenced with ASTM A182, as this standard also references blind and reducing plate flanges without bosses or hubs.

The flanges are supplied in an array of different pressure ratings and formats to suit the customer's application. Slip-On, Weld-Neck and Lap-Joint Flanges are three of the most popular, with Threaded and Blind Flanges supplied to order.

Flanges

- Slip-On Flanges
- Lap-Joint Flanges
- Weld-Neck Flanges
- Blind Flanges
- Threaded Flanges
- Socket Weld Flanges
- Ring Type Joint

Sizes: ½" to 24" NB

Pressure Ratings:

125lb, 150lb, 300lb, 600lb, 900lb, 1500lb & 2500lb

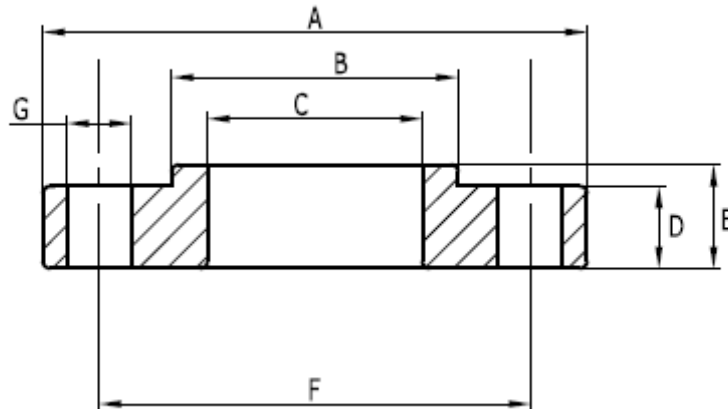
Related Standards

- ASTM A 182:02
- MSS SP43:91



Data Sheet

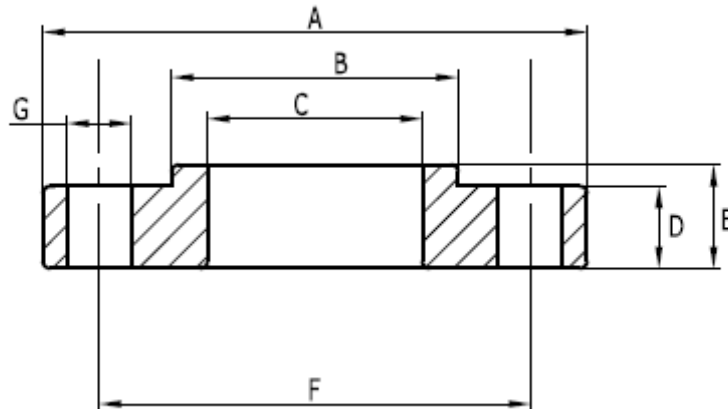
ASA Class 150lb Slip-On Plate Flange



Size	A	B	C	D	E	F	G	No of Holes	Bolt Size
1/2"	88.9	34.9	22.3	9.5	11.1	60.3	15.9	4	
3/4"	98.4	42.9	27.7	11.1	12.7	69.8	15.9	4	
1"	107.9	50.8	34.5	12.7	14.3	79.4	15.9	4	
1 1/4"	117.5	63.5	43.2	14.3	15.9	88.9	15.9	4	
1 1/2"	127.0	73.0	49.5	15.9	17.5	98.4	15.9	4	
2"	152.4	92.1	62.0	17.4	19.0	120.6	19.0	4	
2 1/2"	177.8	104.8	74.7	20.6	22.2	139.7	19.0	4	
3"	190.5	127.0	90.7	22.2	23.8	152.4	19.0	4	
3 1/2"	215.9	139.7	103.4	22.2	23.8	177.8	19.0	8	
4"	228.6	157.2	116.1	22.5	23.8	190.5	19.0	8	
5"	254.0	185.7	143.8	22.2	23.8	215.9	22.2	8	
6"	279.0	215.9	170.7	23.8	25.4	241.3	22.2	8	
8"	342.9	269.9	221.5	27.0	28.6	298.4	22.2	8	
10"	406.4	323.8	276.4	28.6	30.2	361.9	25.4	12	
12"	482.6	381.0	327.2	30.2	31.8	431.8	25.4	12	
14"	533.4	412.7	359.2	33.3	34.9	476.2	28.6	12	
16"	596.9	469.9	410.5	34.9	36.5	539.7	28.6	16	
18"	635.0	533.4	461.8	38.1	39.7	577.8	31.7	16	
20"	698.5	584.2	513.1	41.3	42.9	635.0	31.7	20	
24"	812.8	692.1	616.0	46.0	47.6	749.3	34.9	20	

Data Sheet

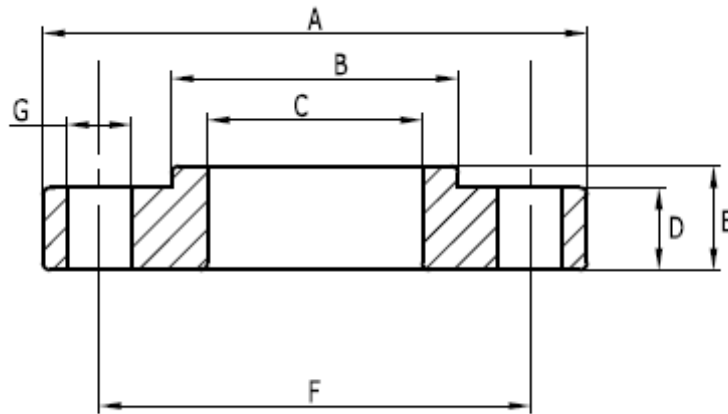
ASA Class 300lb Slip-On Plate Flange



Size	A	B	C	D	E	F	G	No of Holes	Bolt Size
1/2"	95.2	34.9	22.3	12.7	14.3	66.7	15.9	4	
3/4"	117.5	42.9	27.7	14.3	15.9	82.5	19.0	4	
1"	123.8	50.8	34.5	15.9	17.5	88.9	19.0	4	
1 1/4"	133.3	63.5	43.2	17.4	19.0	98.4	19.0	4	
1 1/2"	155.6	73.0	49.2	19.0	20.6	114.3	22.2	4	
2"	165.1	92.1	62.0	20.6	22.2	127.0	19.0	8	
2 1/2"	190.5	104.8	74.7	23.8	25.4	149.2	22.2	8	
3"	209.5	127.0	90.7	27.0	28.6	168.3	22.2	8	
3 1/2"	228.5	139.7	103.4	28.6	30.2	184.1	22.2	8	
4"	254.0	157.2	116.1	30.2	31.8	200.0	22.2	8	
5"	279.4	185.7	143.8	33.3	34.9	234.9	22.2	8	
6"	317.5	215.9	170.7	34.9	36.5	269.9	22.2	12	
8"	381.0	269.9	221.5	39.7	41.3	330.2	25.4	12	
10"	444.5	323.8	276.4	46.0	47.6	387.3	28.6	16	
12"	520.7	381.0	327.2	49.2	50.8	450.8	31.7	16	
14"	584.2	412.7	359.2	52.4	54.0	514.3	31.7	20	
16"	647.7	469.9	410.5	55.6	57.2	571.5	34.9	20	
18"	711.2	533.4	461.8	58.7	60.3	628.5	34.9	24	
20"	774.7	584.2	513.1	61.6	63.5	685.8	34.9	24	
24"	914.4	692.1	616.0	68.2	69.8	812.8	41.3	24	

Data Sheet

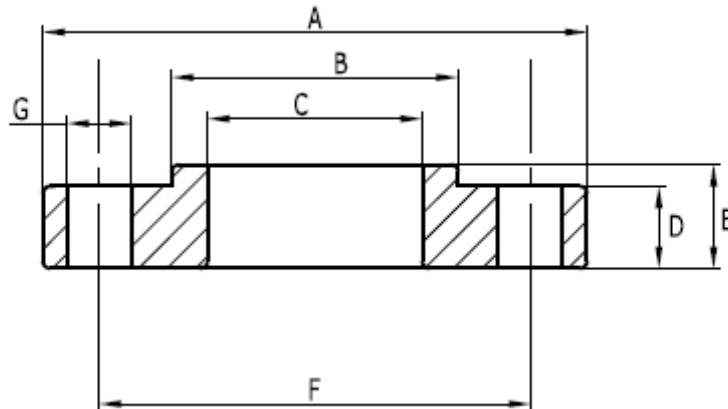
ASA Class 600lb Slip-On Plate Flange



Size	A	B	C	D	E	F	G	No of Holes	Bolt Size
1/2"	95.2	34.9	22.3	20.6	14.3	66.7	15.9	4	
3/4"	117.5	42.9	27.7	22.2	15.9	82.5	19.0	4	
1"	123.8	50.8	34.5	23.8	17.5	88.9	19.0	4	
1 1/4"	133.3	63.5	43.2	26.9	20.6	98.4	19.0	4	
1 1/2"	155.6	73.0	49.2	28.5	22.2	114.3	22.2	4	
2"	165.1	92.1	62.0	31.7	25.4	127.0	19.0	8	
2 1/2"	190.5	104.8	74.7	34.9	28.6	149.2	22.2	8	
3"	209.5	127.0	90.7	38.1	31.8	168.3	22.2	8	
3 1/2"	228.6	139.7	103.4	41.2	34.9	184.1	25.4	8	
4"	273.0	157.2	116.1	44.4	38.1	215.9	25.4	8	
5"	330.2	185.7	143.8	50.7	44.4	266.7	28.6	8	
6"	355.6	215.9	170.7	53.9	47.6	292.1	28.6	12	
8"	419.1	269.9	221.5	61.9	55.6	349.2	31.7	12	
10"	508.0	323.8	276.4	69.8	63.5	431.8	34.9	16	
12"	558.8	381.0	327.2	73.0	66.7	488.9	34.9	20	
14"	603.2	412.7	359.2	76.2	69.9	527.0	38.1	20	
16"	685.8	469.9	410.5	82.5	76.2	603.2	41.3	20	
18"	742.9	533.4	461.8	88.9	82.6	654.0	44.4	20	
20"	812.8	584.2	513.1	95.2	88.9	723.9	44.4	24	
24"	939.8	692.1	616.0	107.9	101.6	838.2	50.8	24	

Data Sheet

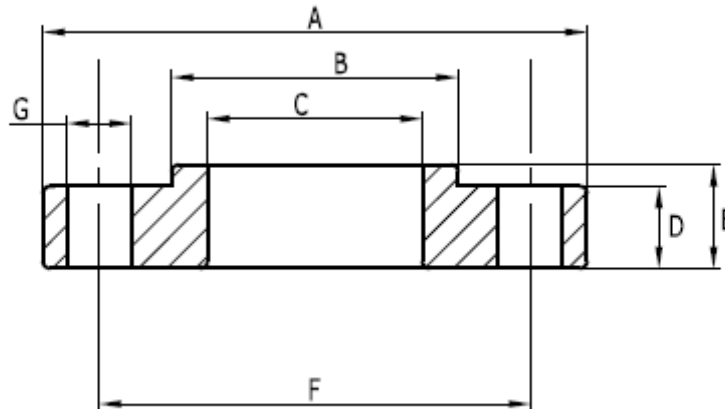
ASA Class 900lb Slip-On Plate Flange



Size	A	B	C	D	E	F	G	No of Holes	Bolt Size
1/2"	120.6	34.9	22.3	22.2	28.5	82.5	22.2	4	
3/4"	130.2	42.9	27.7	25.4	31.7	88.9	22.2	4	
1"	149.2	50.8	34.5	28.6	34.9	101.6	25.4	4	
1 1/4"	158.7	63.5	43.2	28.6	34.9	111.1	25.4	4	
1 1/2"	177.8	73.0	49.5	31.7	38.0	123.8	28.6	4	
2"	215.9	92.1	62.0	38.1	44.4	165.1	25.4	8	
2 1/2"	244.5	104.8	74.7	41.3	47.6	190.5	28.6	8	
3"	241.3	127.0	90.7	38.1	44.4	190.5	25.4	8	
4"	292.1	157.2	116.1	44.5	50.8	234.9	31.7	8	
5"	349.2	185.7	143.8	50.8	57.1	279.4	34.9	8	
6"	381.0	215.9	170.7	55.6	61.9	317.5	31.7	12	
8"	469.9	269.9	221.5	63.5	69.8	393.7	38.1	12	
10"	546.1	323.8	276.3	69.9	76.2	459.9	38.1	16	
12"	609.6	381.0	327.1	79.4	85.7	533.4	38.1	20	
14"	641.3	412.7	359.1	85.7	92.0	558.8	41.3	20	
16"	704.8	469.9	410.5	88.9	95.2	615.9	44.4	20	
18"	787.4	533.4	461.8	101.6	107.9	685.8	50.8	20	
20"	857.2	584.2	513.1	107.9	114.2	749.3	54.0	20	
24"	1041.4	692.1	616.0	139.7	146.0	901.7	66.7	20	

Data Sheet

ASA Class 1500lb Slip-On Plate Flange



Size	A	B	C	D	E	F	G	No of Holes	Bolt Size
1/2"	120.6	34.9	22.3	22.2	28.5	82.5	22.2	4	
3/4"	130.2	42.9	27.7	25.4	31.7	88.9	22.2	4	
1"	149.2	50.8	34.5	28.6	34.9	101.6	25.4	4	
1 1/4"	158.7	63.5	43.2	28.6	34.9	111.1	25.4	4	
1 1/2"	177.8	73.0	49.5	31.8	38.0	123.8	28.6	4	
2"	215.9	92.1	62.0	38.2	44.4	165.1	25.4	8	
2 1/2"	244.5	104.8	74.7	41.3	47.6	190.5	28.6	8	
3"	266.7	127.0	90.7	47.6	53.9	203.2	31.7	8	
4"	311.1	157.2	116.1	54.0	60.3	241.3	34.9	8	
5"	374.6	185.7	143.8	73.0	79.3	292.1	41.3	8	
6"	393.7	215.9	170.7	82.6	88.9	317.5	38.1	12	
8"	482.6	269.9	221.5	92.1	98.4	393.7	44.4	12	
10"	584.2	323.8	276.3	107.9	114.2	482.6	50.8	12	
12"	673.1	381.0	327.1	123.8	130.1	571.5	54.0	16	
14"	749.3	412.7	359.1	133.3	139.6	635.0	60.3	16	
16"	825.5	469.9	410.5	146.0	152.3	704.8	66.7	16	
18"	914.4	533.4	461.8	161.9	168.2	774.7	73.0	16	
20"	984.2	584.2	513.1	177.8	184.1	831.8	79.4	16	
24"	1168.4	692.1	615.9	203.2	209.5	990.6	92.1	16	